



US006084184A

United States Patent [19][11] **Patent Number:** **6,084,184****Troisi**[45] **Date of Patent:** ***Jul. 4, 2000**[54] **CHECKWEIGHER WHICH WEIGHS
PRODUCT SUSPENDED BY FLANGE**[75] **Inventor:** **David A. Troisi**, Ithaca, N.Y.[73] **Assignee:** **Hi-Speed Checkweigher Co., Inc.**,
Ithaca, N.Y.[*] **Notice:** This patent is subject to a terminal disclaimer.

3,736,997	6/1973	Bottorf	177/145
3,800,893	4/1974	Ramsay et al.	177/25
4,163,488	8/1979	Brook	177/52 X
4,344,493	8/1982	Salmonsens	177/52
4,566,584	1/1986	Lindstrom	198/504
4,583,636	4/1986	Tas	198/504
4,696,357	9/1987	Beehler et al.	177/145
4,802,571	2/1989	Born et al.	198/817 X
4,998,399	3/1991	Lutzke et al.	198/419.3 X
5,434,366	7/1995	Troisi	177/52

FOREIGN PATENT DOCUMENTS

2160985 1/1986 United Kingdom .

Primary Examiner—Randy W. Gibson
Attorney, Agent, or Firm—Simpson, Simpson & Snyder,
L.L.P.

[21] **Appl. No.:** **08/370,095**[22] **Filed:** **Jan. 9, 1995****Related U.S. Application Data**

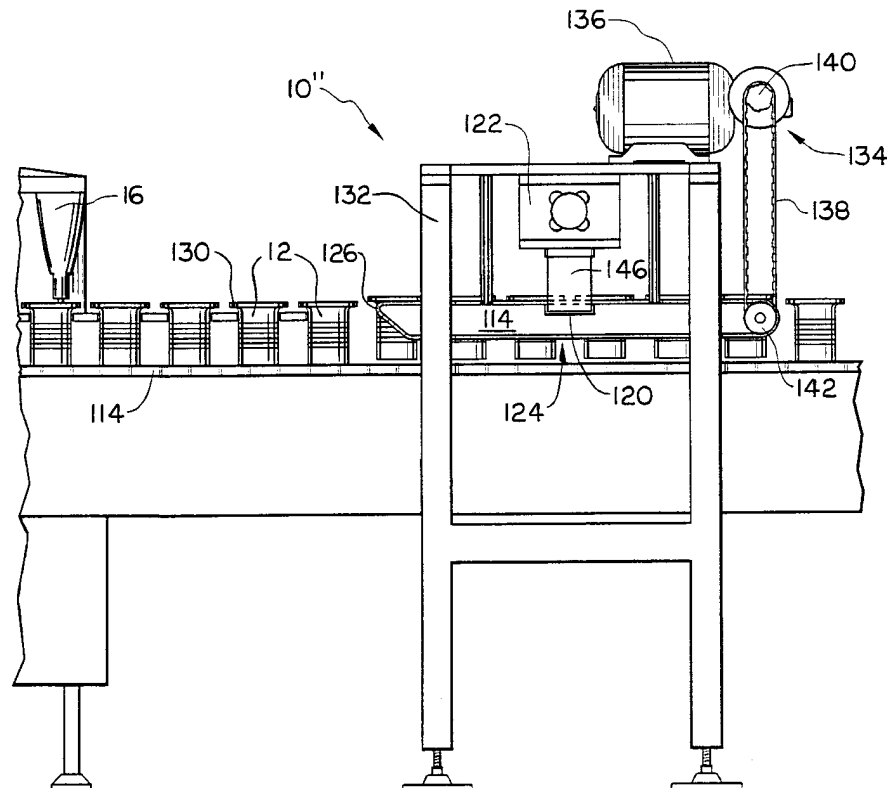
[63] Continuation-in-part of application No. 07/942,647, Sep. 9, 1992, Pat. No. 5,434,366.

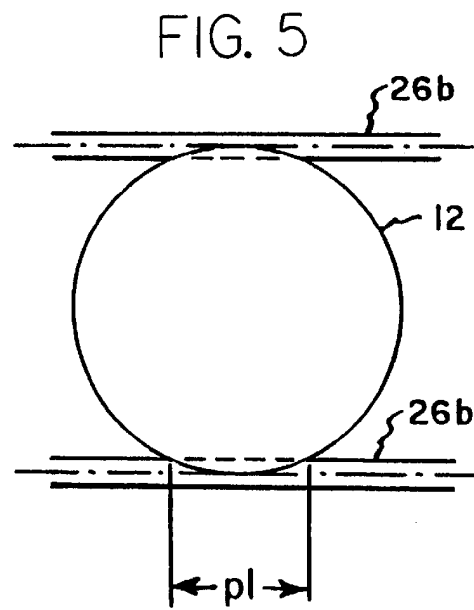
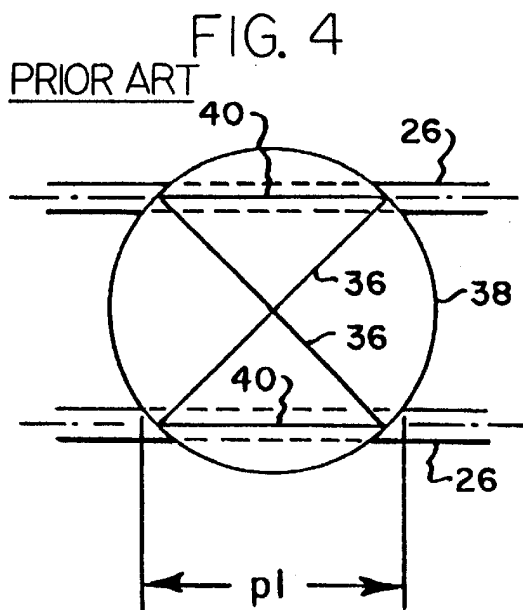
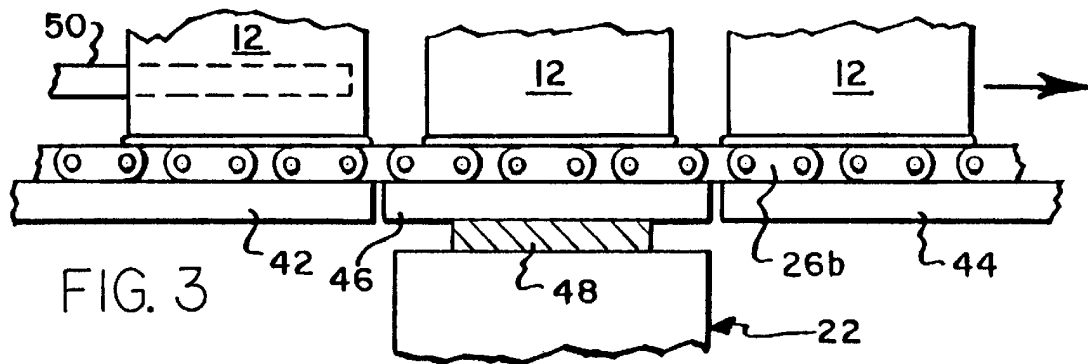
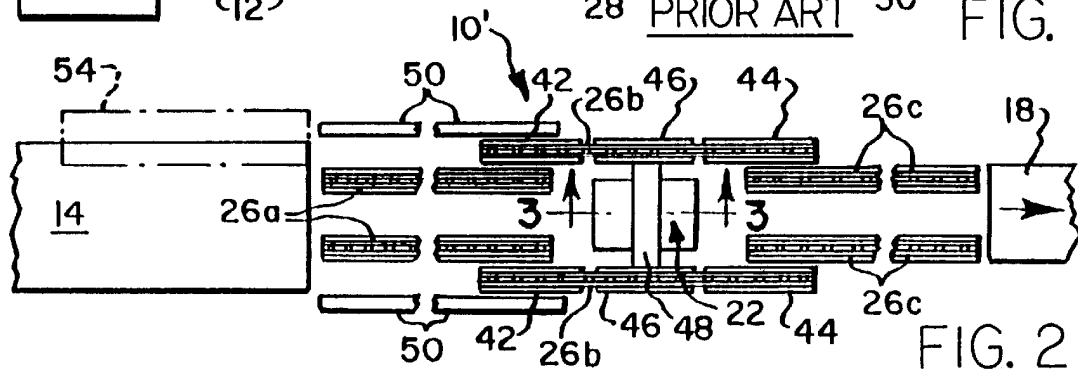
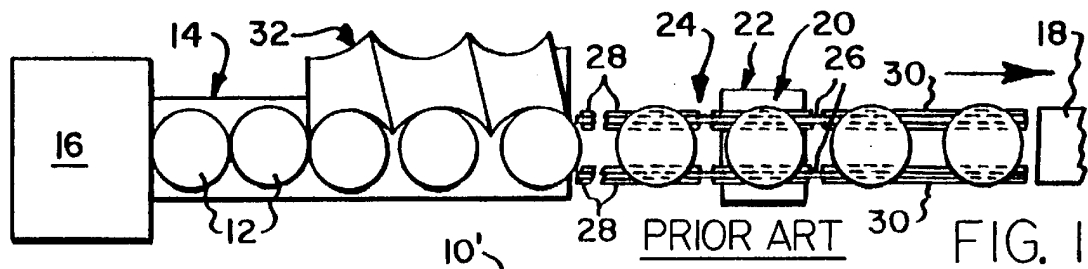
[51] **Int. Cl.⁷** **G01G 19/00**[52] **U.S. Cl.** **177/145**[58] **Field of Search** 198/817; 177/52,
177/145, 119; 209/592, 593, 594, 595,
596[56] **References Cited****U.S. PATENT DOCUMENTS**

2,307,695	1/1943	Mansbendel	209/121
2,661,091	12/1953	Maloney	209/121
3,053,332	9/1962	Buchtenkirch et al.	177/120
3,180,475	4/1965	Del Rosso	198/817

[57] **ABSTRACT**

A method and apparatus is disclosed for use in weighing products having circular or oval footprint or an outwardly projecting flange. A conveyor having a pair of parallel conveyor elements arranged to underengage the footprint or flange only adjacent the periphery thereof transports the products one at a time across a weigh pan or scale device, whose length in the direction of conveyor movement is selected as the lowest value required to achieve a desired settle time for the weigh pan. Preferably, the length of the weigh pan is chosen to be essentially equal to the diameter of products to be weighed.

8 Claims, 4 Drawing Sheets



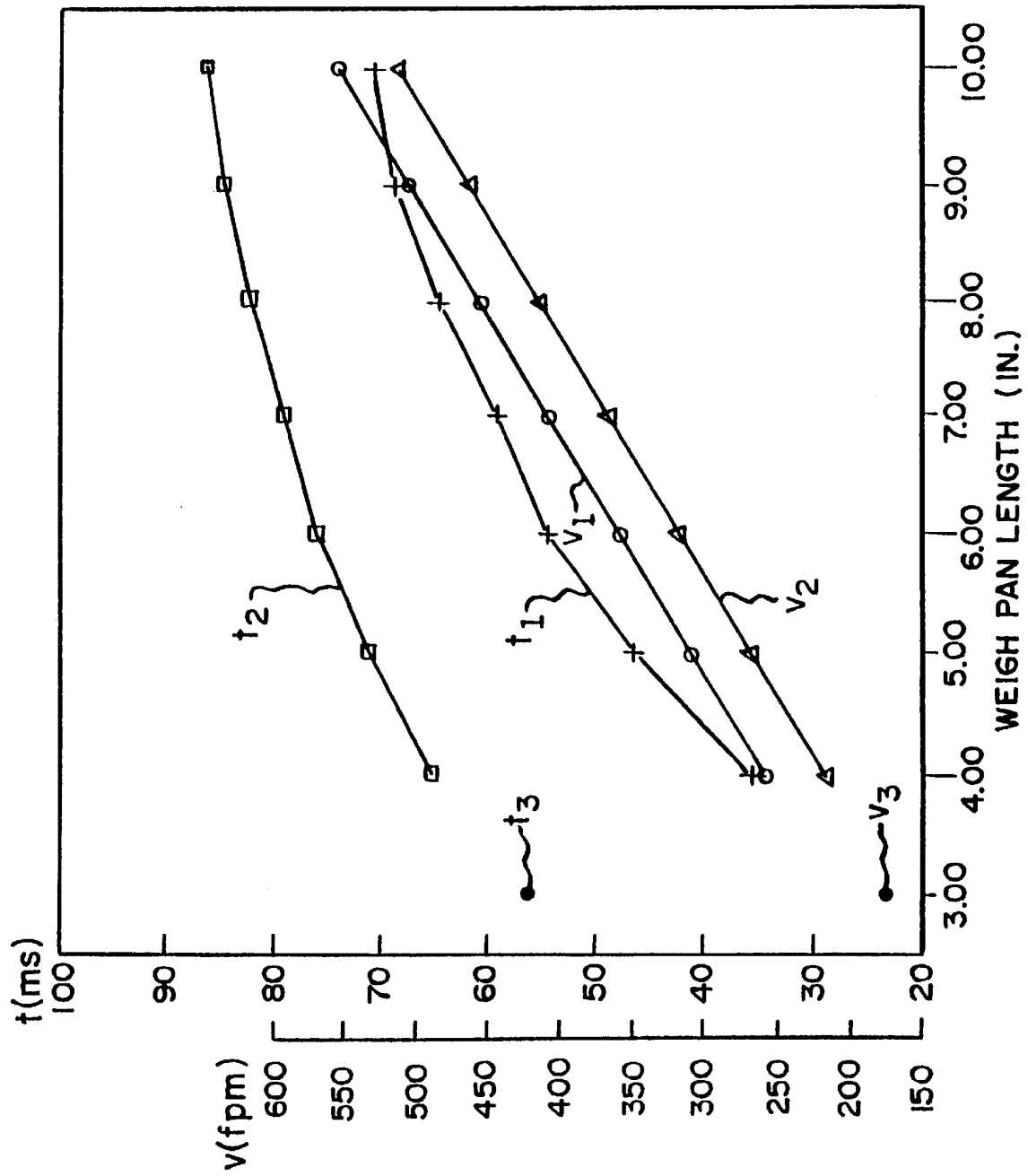


FIG. 6

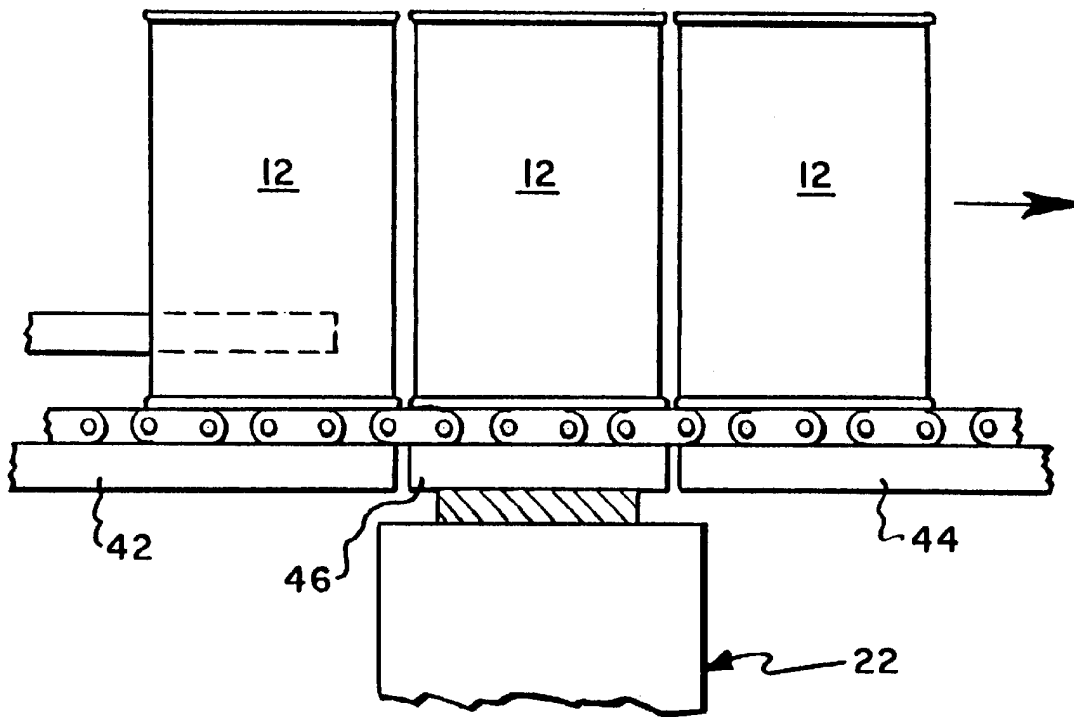
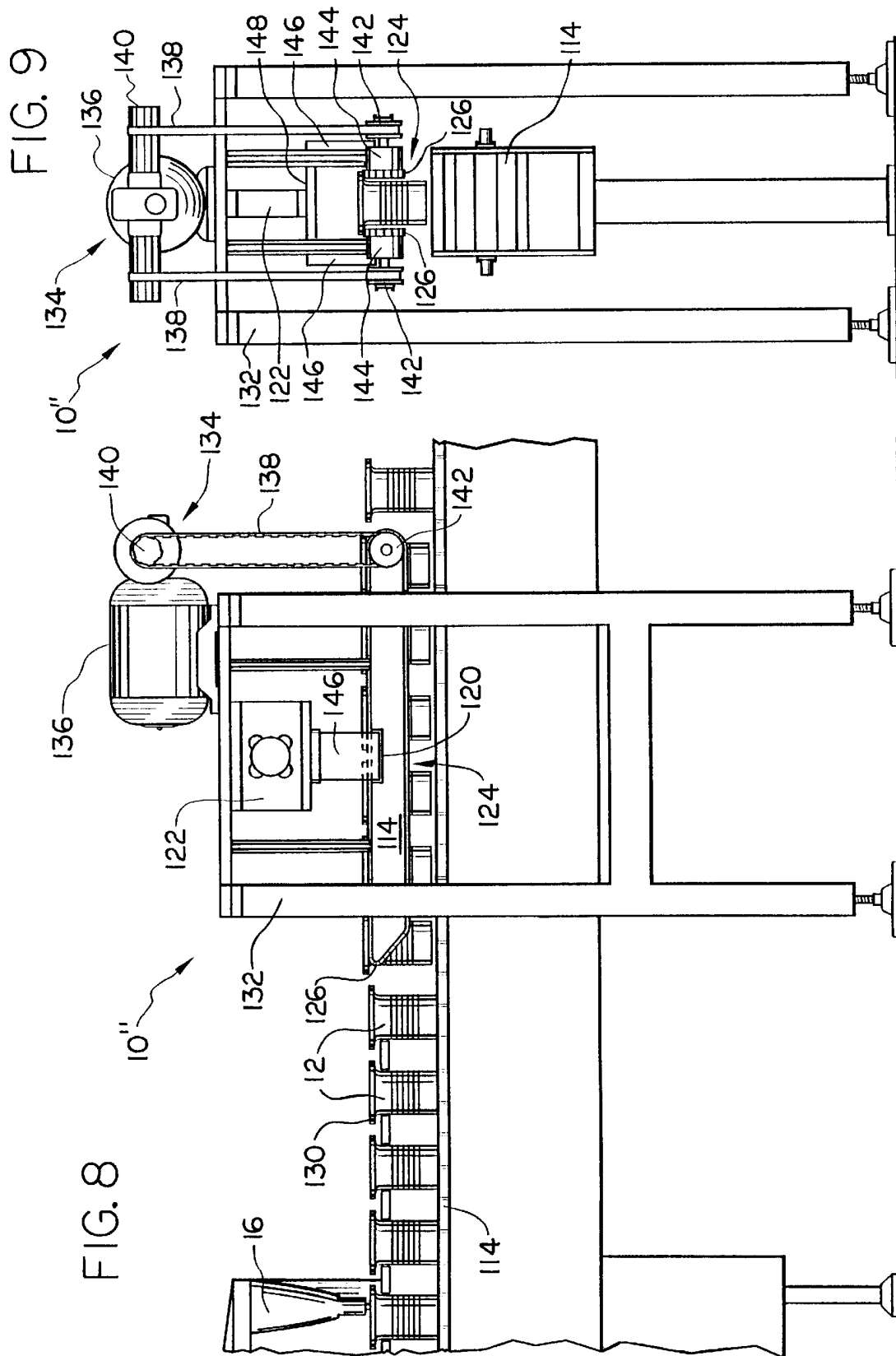


FIG. 7



CHECKWEIGHER WHICH WEIGHS PRODUCT SUSPENDED BY FLANGE

This application is a continuation-in-part of U.S. application Ser. No. 07/942,647 filed Sep. 9, 1992, which issued as U.S. Pat. No. 5,434,366.

BACKGROUND OF THE INVENTION

The invention generally relates to high speed weighing equipment of the type employing a conveyor to transport containers one at a time across a vertically deflectable weigh pan or scale device operable to effect weighing of the products. More particularly, the invention relates to improvements in weighing equipment of the type intended for use in the weighing of containers having either circular or oval footprint configurations and employing conveyors characterized as having a pair of parallel conveying elements, such as endless chains, arranged to underengage the footprints of the containers as they transport the containers for movement across a weigh pan.

When products to be introduced to a checkweigher for weighing purposes are containers having circular or oval footprint configurations, it has been standard industrial practice to introduce the containers from an upstream operation, such as from a filler, in a butt-to-butt or adjacent container touching condition, and then employ a timing worm or other spacing device to accelerate the containers up to a given conveyor transport speed required by system operating conditions and to properly space containers lengthwise of the conveyor in order to ensure the presence of only one container on the weigh pan during each weighing operation.

In the design of checkweighing equipment of the type described, use may be made of the following equations to determine settle time, i.e. the time from when a container is fully on a weigh pan or scale platform until it begins to be transferred off the weigh pan:

Pitch=weigh pan length (ft.)+margin of safety

Speed=pitch×container feed rate

Settle time=

$$\text{Settle time} = \frac{(\text{weigh pan length} - \text{container length})}{\text{speed}}$$

An accepted shortcut to calculate settle time in milliseconds is:

$t(\text{ms})=5000 \times (\text{wpl}-\text{pl})/v$,

where t =time in ms

5000=conversion factor for ft./in. and min./ms

wpl=weigh pan length in inches

pl=container length in inches

v=conveyor speed in fpm.

The type of weighing mechanism employed will determine the required minimum settle time which must be made available in order to weigh each container, with the accuracy of the results of the weighing operation tending to increase as the length of settle time increases beyond such minimum.

The length of the weigh pan was determined by trial and error upon consideration being given to container feed rate,

container length and conveyor speed with weigh pan length increasing as these factors increase. The margin of safety, which is combined with weigh pan length to produce the required pitch or distance between leading edges of adjacent containers, is typically required to be on the order of one inch for the normal range of conveyor speeds in order to ensure against the presence of more than one container on the weigh pan during a weighing operation.

The length of the container is determined by its size and the requirement that the conveyor be designed to provide the most stability for the container as it is conveyed across the weigh pan, during which time it is not otherwise stabilized, as by side mounted guides whose presence would interfere with vertical movement of the container during the weighing operation. Typically, the selection of the distance between centers of the conveyor elements for best container support was determined for containers having circular footprints by a simple geometric construction, where mutually perpendicular diameters were drawn in a circle that represents the footprint of the container, and then two parallel chords were drawn connecting the ends of the diameters to represent the centers of the conveyor elements. The chords defined by the inner or facing edges of the conveyor elements underengaging the footprint, which are parallel to and inwardly of the drawn chords, were then used as the container length in solving the above settle time equation.

Checkweighers constructed with the above considerations in mind have proven adequate for many years to handle container feed rates commonly encountered in the food processing industry. In recent years, demands for checkweighers capable of handling higher container feed rates have been met by increasing weigh pan length and conveyor speed. However, as conveyor speeds have been increased, there has been experienced an increase in problems, including for example an increase in conveyor noise and wear, and reduction in stability of containers during a weighing operation, particularly for the case of taller containers.

SUMMARY OF THE INVENTION

The present invention relates to improvements in checkweighers which permit a desired settle time to be achieved while reducing both length of the weigh pan and conveyor chain speed.

The present invention achieves substantial improvements in performance over prior checkweighers by arranging the conveyor chains to underengage the product footprint or an outwardly projecting flange of the container only immediately adjacent the periphery thereof in order to minimize the effective length of each product seen by the weigh pan, and then reducing the length of the weigh pan to reduce the instability of products transported thereover in this fashion. Modification of prior checkweighers in this fashion provides for substantial increase in available settle time, as well as a reduction in conveyor speed, when compared to such prior checkweighers.

The improved characteristics according to the present invention further allow the margin of safety to be substantially reduced, as compared to that required for prior checkweighers, and this in turn serves to provide for further reduction in conveyor speeds encountered for any given settle time.

In a presently preferred form of the invention, the length of the weigh pan is selected to correspond essentially exactly to the diameter of a product to be weighed.

Reduced conveyor speeds, achievable with the practice of the present invention, are highly desirable. Alternatively, the

present invention allows a checkweigher to accommodate a greater product feed rate, as compared with prior checkweighers, for any given conveyor speed.

BRIEF DESCRIPTION OF THE DRAWINGS

The nature and mode of operation of the present invention will now be more fully described in the following detailed description taken with the accompanying drawings wherein:

FIG. 1 is a schematic view showing a checkweigher arranged to weigh containers received from an upstream processing operation;

FIG. 2 is an enlarged schematic view of a checkweigher;

FIG. 3 is a sectional view taken generally along the line 3—3 in FIG. 2;

FIG. 4 is a view showing the conventional manner of determining placement of chain centers;

FIG. 5 is a view showing placement of chain centers in accordance with the present invention;

FIG. 6 is a graph providing an illustrative comparison of settle time and conveyor speed achievable with the present invention and that obtainable by use of prior art techniques; and

FIG. 7 is a view similar to FIG. 3, but showing a presently preferred construction;

FIG. 8 is a schematic side view of a checkweigher having conveyor chains arranged to underengage a flange on each container; and

FIG. 9 is a schematic end view of the checkweigher shown in FIG. 8.

DETAILED DESCRIPTION

Reference is first made to FIG. 1, wherein there is shown a typical prior art checkweighing system including checkweigher 10 arranged to weigh cylindrical containers 12 supplied by an infeed conveyor 14 one at a time from a processing station, such as a filler 16 serving to introduce a product, such as soup, into the containers. After a weighing operation, containers determined to be of proper weight are transported by a discharge conveyor 18 to a desired downstream processing station, not shown, and a suitable discharge device, also not shown, is normally arranged adjacent the outlet end of checkweigher 10 for purposes of separating and discharging containers determined to be of improper weight before the latter are presented to the downstream processing station.

A typical checkweigher comprises a weigh pan or scale platform 20 supported for vertical displacement by a displacement measuring device, such as a compression strain gage type transducer 22, and a conveyor mechanism 24 for transporting containers 12 one at a time across the weigh pan, as an incident to which the measuring device produces an output signal(s) indicative of the weight of each presented container. Conveyor mechanism 24 may be variously defined, but typically it may include, as depicted in FIG. 1, a pair of driven parallel conveyor elements in the form of endless chains 26,26 having a generally horizontal conveyor flight slidably supported in sequence by vertically stationary, infeed guides 28,28; weigh pan 20; and vertically stationary discharge guides 30,30. Alternatively, the conveyor may be defined by separate conveyor inlet, weighing and discharge sections associated, respectively, with infeed guides 28,28; weigh pan 20 and discharge guides 30,30, wherein the conveyor chains of the sections are aligned and driven at the same speed.

Further, in accordance with standard practice, a timing worm or other suitable spacing device 32 would be positioned adjacent the inlet end of checkweigher 10 and employed to act on containers 12 supplied thereto in a butt-to-butt fashion, so as to accelerate the containers up to a given conveyor transport speed required by the system operating conditions and to properly space the containers lengthwise of chains 26,26 in order to ensure that only one container is positioned above weigh pan 20, during a weighing operation.

For purposes of illustration of typical operating parameters of prior high speed checkweighing equipment, reference is first made to the following Chart I whose values were calculated using the standard equations:

$$\text{Pitch} = \text{weigh pan length (ft.)} + \text{margin of safety,}$$

$$\text{Speed} = \text{pitch} \times \text{container feed rate, and}$$

$$t(\text{ms}) = 5000 \times (\text{wpl} - \text{pl}) / v$$

for the case where it is required to weigh 600 standard soup size cans per minute, wherein such cans have footprint diameters of 3.00 inches. A standard safety margin of one inch was employed in calculating pitch and the effective length "pl" of each container was determined to be 2.25 inches by use of the standard construction method shown in FIG. 4, wherein mutually perpendicular diameters 36,36 were drawn in a circle 38 having a diameter of 3.00 inches, which represents the circular footprint or lower engageable or support surface of the containers to be weighed, and then two parallel chords 40,40 were drawn between the ends of the diameters to represent the centers of the conveyor chains 26,26. Use of conveyor chains of 3/8 inch width with a 3.00 inch diameter can is depicted in FIG. 4. For this arrangement, and assuming the cans are accurately centered on conveyor chains 26,26, the effective length of a can is 2.25 inch and corresponds to chords defined by the inner or facing edges of the conveyor chains underengaging the footprint, such chords or inner edges being arranged inwardly of and parallel to the drawn chords.

CHART I

WPL (IN)	EFFECTIVE PKG LENGTH (IN)	PACKAGE PITCH (IN)	SPEED (FPM)	SETTLE TIME (ms)
4.00	2.25	5.00	250	35
5.00	2.25	6.00	300	46
6.00	2.25	7.00	350	54
7.00	2.25	8.00	400	59
8.00	2.25	9.00	450	64
9.00	2.25	10.00	500	68
10.00	2.25	11.00	550	70
11.00	2.25	12.00	600	73
12.00	2.25	13.00	650	75
13.00	2.25	14.00	700	77
14.00	2.25	15.00	750	78
15.00	2.25	16.00	800	80
16.00	2.25	17.00	850	81
17.00	2.25	18.00	900	82
18.00	2.25	19.00	950	83

In accordance with the present invention, checkweigher 10' is shown in FIG. 2 as being provided with 5 separately driven, but like speed, infeed, weighing and discharge conveyor sections having pairs of parallel conveyor chains 26a,26a; 26b,26b and 26c,26c, respectively, wherein the center-to-center spacing of chains 26b,26b is greater than the center-to-center spacing of the chains 26a,26a and 26c,26c, and the opposite ends of chains 26b,26b bridge across

adjacent ends of chains **26a,26a** and **26c,26c** in order to provide an uninterrupted transport support surface for underengaging the footprints of the containers to be weighed.

Referring to FIGS. **2** and **3**, it will be understood that the upper flights of conveyor chains **26b,26b** have their upstream and downstream ends supported by vertically stationary guides **42,42** and **44,44**, respectively, and their central or intermediate portions supported by vertically movable guides **46,46**, which are interconnected by transversely extending bracket **48** and coupled thereby to transducer **22**. Guides **46,46** serve to define weigh pan **20**, whose length is the lengthwise dimension of such guides. Preferably, a pair of parallel side guide rails **50,50** are arranged to extend lengthwise of conveyor chains **26a,26a** and have their downstream ends terminate intermediate the ends of stationary chain guides **42,42**, and preferably immediately adjacent the upstream ends of guides **46,46** in order to stabilize containers **12** during transport thereof towards the weigh pan.

By now referring to FIG. **5**, it will be noted that the center-to-center spacing between conveyor chains **26b,26b** preferably corresponds essentially to the footprint diameter of containers **12** to be weighed, such that the container length "pl" actually supported by such chains is substantially reduced compared with the value of "pl" shown in FIG. **4** as being obtained by practice of the conventional construction method described above. On the other hand, the center-to-center spacing between conveyor chains **26a,26a** and **26c,26c** is preferably as close as possible to the normal spacing obtained by use of the conventional construction method. Use of conveyor chains of $\frac{3}{8}$ inch width with a 3.00 inch diameter can is depicted in FIG. **5**. While this mode of supporting containers **12** by conveyor chains **26b,26b** during passage over a weigh pan is obviously undesirable from a stability point of view, it has been found to be nonetheless acceptable practice under the substantially reduced weigh pan length and conveyor speed operating conditions permitted by the practice of the present invention. Moreover, it has been found that the reductions in weigh pan lengths obtainable by the practice of the present invention allows for substantial reduction in the required margin of safety compared to prior conventional checkweigher practice, which in turn serves to permit a substantial reduction in required conveyor speed for a given set of checkweigher operating requirements.

With the practice of the present invention, a conventional timing worm need not be used to impart substantial accelerations to containers fed to checkweigher **10'**. However, it is still desired that proper spacing be maintained between containers in order to prevent the presence of more than one container on the weigh pan, during a weighing operation, and to maximize rate of feed of containers through the checkweigher. Proper container spacing may be achieved by driving conveyor chains **26a,26a**; **26b,26b** and **26c,26c** at a slightly faster transport speed than infeed conveyor **14**, assuming that containers **12** are presented by the latter in butt-to-butt relationship. Alternatively, a suitable timing device **54** shown in broken line in FIG. **2** may be arranged adjacent the discharge end of infeed conveyor **14** for purposes of providing for proper container spacings.

To facilitate appreciation of the advantages obtained by the practice of the present invention, reference is made to the following Chart II, whose values were calculated by using the same standard equations employed in producing Chart I for the like case of a required feed rate of 600 standard soup

size cans per minute, but with reductions in effective container length to 1.25 inch and margin of safety to 0.25 inch.

CHART II

WPL (IN)	EFFECTIVE PKG LENGTH (IN)	PACKAGE PITCH (IN)	SPEED (FPM)	SETTLE TIME (ms)
4.00	1.25	4.25	212.5	65
5.00	1.25	5.25	262.5	71
6.00	1.25	6.25	312.5	76
7.00	1.25	7.25	362.5	79
8.00	1.25	8.25	412.5	82
9.00	1.25	9.25	462.5	84
10.00	1.25	10.25	512.5	85
11.00	1.25	11.25	562.5	87
12.00	1.25	12.25	612.5	88
13.00	1.25	13.25	662.5	89
14.00	1.25	14.25	712.5	89
15.00	1.25	15.25	762.5	90
16.00	1.25	16.25	812.5	91
17.00	1.25	17.25	862.5	91
18.00	1.25	18.25	912.5	92

Chart I and Chart II are plotted in FIG. **6**, wherein curves t_1 and v_1 represent the values of settle time and conveyor speed shown in Chart I and curves t_2 and v_2 represent the values of settle time and conveyor speed shown in Chart II. The significance of the changes in checkweigher operating conditions resulting from a practice of the present invention will become more apparent upon viewing FIG. **6**, when it is understood that the most sensitive weighing devices presently available for use with checkweighers of the type described require a minimum of between 40 ms and 45 ms settle time, and that it is always desirable to increase the settle time to the greatest possible extent in order to maximize the accuracy of the weights being measured. If, for purposes of comparison, it is assumed that a previously typical settle time of 65 ms is required to produce a sufficient level of accuracy in weighing 3.00 inch diameter soup cans at a rate of 600 cans per minute, the present invention would require a weigh pan length of 4.00 inches and a conveyor speed of 212.5 fpm, whereas prior practice would require a weigh pan length of greater than 8.00 inches and a conveyor speed greater than 450 fpm. FIG. **6** illustrates that use of the present invention permits reduction of the values of weigh pan length and conveyor speed to less than one half those required by prior commercial practice for a given required settle time. This general pattern is consistent with increases in the size and rate of feed of containers to be weighed.

In a recently developed and now preferred form of the invention shown in FIG. **7**, the length of the weigh pan employed is further reduced to be essentially equal to, and preferably equal to, the diameter of the containers to be weighed, thereby ensuring that only one container can be supported by the weigh pan during a weighing operation. The length of the weigh pan could be slightly less than container diameter, but this would not be desirable.

Tests have indicated that under the checkweigher operating conditions achievable with this form of the invention, weighing of containers **12** may be effected as same are passed butt-to-butt over the weigh pan, if slight weighing inaccuracies occasioned by friction between adjacent containers is acceptable. However, it is preferable to provide for a slight spacing between adjacent containers or margin of safety in order to prevent friction induced weighing inaccuracies, but such margin of safety may be substantially less than that mentioned in connection with form of the invention described with reference to Chart II.

Reference is now made to the following Chart III, which was calculated using the same equations described above,

the same operating conditions of container feed rate and container size used in calculating Charts I and II, and the same effective container length used in calculating Chart II, but with a weigh pan length of 3.00 inches, which corresponds to the assumed footprint diameter of the containers to be weighed and a nominal margin of safety of 0.1 inch.

CHART III

WPL (IN)	EFFECTIVE PKG LENGTH (IN)	PACKAGE PITCH (IN)	SPEED (FPM)	SETTLE TIME (ms)
3.00	1.25	3.10	155	56

By viewing Chart III, it will be noted that in accordance with the presently preferred form of the invention, once input operating requirements of container feed rate and container diameter are established, all operating parameters of the checkweigher, including weigh pan length, are established. The values of Chart III are designated in FIG. 6 as t_3 and v_3 .

It will be noted that the settle time of 56 ms shown in Chart III is less than the settle time of 65 ms, which was used as a reference for comparison of the values of Charts I and II in that 65 ms was previously considered to be necessary to obtain acceptable weighing accuracies with prior checkweighing equipment using scale devices thought to have nominal response times of 40 ms to 45 ms. However, it has unexpectedly been noted that as conveyor speeds were decreased in accordance with the practice of the present invention, required settle time also decreased resulting in a settle time of 56 ms being more than sufficient to provide acceptable weighing accuracy.

Containers having a generally oval footprint configuration may also be weighed in accordance with the present invention, but care must be taken to ensure that either the major or minor axis of the footprint, and preferably the minor axis, is maintained in alignment with the direction of conveyor travel.

While the foregoing detailed description relates to checkweighers having conveyor chains **26b,26b** arranged to underengage the footprint of each container at the periphery thereof to minimize the effective length of each container, it will be understood from FIGS. 8 and 9 that it is also possible to minimize effective length by providing a checkweigher **10"** with conveyor chains **126,126** arranged to underengage an outwardly projecting flange **130** provided at a predetermined distance above the footprint of each container **12**, such as a lid seam flange provided for purposes of seaming a lid to the container subsequent to filling or a neck flange provided on a neck of a container having an irregular shape or footprint. By spacing conveyor chains **126,126** to underengage flange **130** at its periphery, a desired settle time may again be achieved while reducing both length of the weigh pan and conveyor chain speed.

In the embodiment depicted in FIGS. 8 and 9, checkweigher **10"** includes a tower **132** for supporting a weigh conveyor **124** above a conventional infeed/discharge conveyor **114** straddled by the tower. Weigh conveyor **124** includes a pair of parallel, endless conveyor chains **126,126** spaced apart and having an upper horizontal flight positioned vertically relative to infeed/discharge conveyor **114** for receiving containers **12** from the infeed/discharge conveyor, which preferably supplies containers in butt-to-butt relationship, and supporting the containers by underengagement with flanges **130** such that the product footprints are lifted slightly from surface-to-surface contact with the

infeed/discharge conveyor. Weigh conveyor **124** is situated downstream from filler **16** and, where flange **130** is a lid seam flange, upstream from a lid seamer (not shown). Weigh conveyor **124** is separately driven by suitable drive means **134**, such as an electric motor **136** connected thereto by a drive train including drive chains **138,138** cooperating with driven shaft **140** and sprocket wheels **142,142**. Accordingly, weigh conveyor **124** may be driven at a selected speed faster than the speed of infeed/discharge conveyor **114** to produce a desired product pitch, which may be essentially equal to the length of a container in the direction of travel.

The upper flights of conveyor chains **126,126** have their upstream product infeed and downstream product discharge ends supported by vertically stationary guides **144,144**, and their central or intermediate portions supported by vertically movable guides **146,146**, which are interconnected by transversely extending bracket **148** and coupled thereby to a transducer **122** supported by tower **132**. Guides **146,146** serve to define weigh pan **120**, whose length is the lengthwise dimension of such guides. The length of weigh pan **120** is essentially equal to, and preferably equal to, the diameter of the containers to be weighed, thereby ensuring that only one container can be supported by the weigh pan during a weighing operation. The vertical position of the upper flights of conveyor chains **126,126** is chosen such that the flange **130** of each container **12** is engaged by conveyor chains **126,126** at the upstream end of weigh conveyor **124**, thereby causing each container to be lifted and supported above infeed/discharge conveyor **114** a sufficient distance to permit necessary downward vertical deflection of weigh pan **120** as the container passes thereover.

The substantial reductions in conveyor speed obtainable by the practice of the present invention provide numerous benefits, including greater stability for taller containers; reduction in agitation of liquid product with which the containers are filled resulting in greater stability of containers during a weighing operation; reduction in mechanical noise and wear of the conveyor of the checkweigher; reduction in container damage; greater ease of sorting containers after weighing; and the ability to weigh containers at higher rates than heretofore possible. In addition, the embodiment of FIGS. 8 and 9 offers the benefits mentioned above with simple installation. Since tower **132** straddles an existing conveyor line, the user does not have to cut into or interrupt such conveyor line to install the invention.

What is claimed is:

1. In a checkweigher for use in weighing products having a footprint and an outwardly projecting flange of either a circular or an oval configuration above said footprint, said checkweigher having a weigh pan vertically deflectable to provide a signal indicative of the weight of said products and a product conveyor having a pair of parallel, product supporting conveyor elements arranged to move across and in surface engagement with said weigh pan for transporting said products one at a time across said weigh pan to effect weighing thereof, the improvement comprising in combination:

said conveyor elements being arranged to underengage with said flange of said product only immediately adjacent the periphery of said flange of said product while said product is moving across said weigh pan, and said weigh pan having a length in a direction of movement of said conveyor elements corresponding essentially to the length of said products, as measured in said direction of movement.

2. The improvement according to claim 1, wherein said products transported across said weigh pan have a pitch essentially equal to said length of said products.

9

3. The improvement according to claim 1, wherein said conveyor elements are endless conveyor elements having an upper horizontal flight supported adjacent product infeed and discharge ends thereof by vertically stationary guides and supported intermediate said stationary guides by vertically deflectable guides defining said weigh pan, and said checkweigher additionally includes an infeed conveyor for transporting said products to said product infeed end of said upper horizontal flight, said infeed conveyor being arranged to underengage with said product footprint and said product infeed end of said upper horizontal flight being arranged to receive said products from said infeed conveyor by underengagement with said flange.

4. The improvement according to claim 3, wherein said stationary guides and said deflectable guides are supported by a tower straddling said infeed conveyor.

5. The improvement according to claim 4, wherein said tower further supports drive means for driving said conveyor elements.

6. A method of weighing products characterized as having a footprint and an outwardly projecting flange of either a circular or an oval configuration above said footprint comprising the steps of:

providing product weighing means including a weigh pan vertically deflectable to provide a signal indicative of the weight of said products;

transporting said products in a direction of movement across said weigh pan by providing a pair of moving conveyor elements in underengagement with said flange of said products only immediately adjacent the periphery of said flange and in surface engagement with said weigh pan for effecting weighing of said products one at a time; and

providing said weigh pan with a length in said direction of movement not substantially greater than a length of said products as measured in said direction of movement.

10

7. The method according to claim 6, wherein said products are caused to be arranged on said conveyor elements in a substantially butt-to-butt relationship.

8. In a checkweigher for use in weighing products having a footprint and an outwardly projecting flange of either a circular or an oval configuration above said footprint, said checkweigher having a weigh pan vertically deflectable to provide a signal indicative of the weight of said products and a weighing conveyor section arranged to move across and in surface engagement with said weigh pan for transporting said products one at a time across said weigh pan to effect weighing thereof, the improvement comprising in combination:

said weighing conveyor section is an endless conveyor having a pair of parallel conveyor elements spaced apart to underengage with said flange only immediately adjacent the periphery of said flange, said conveyor elements having an upper horizontal flight supported adjacent product infeed and discharge ends thereof by vertically stationary guides and supported intermediate said stationary guides by vertically deflectable guides defining said weigh pan;

a product infeed conveyor for supplying said products in essentially a butt-to-butt relationship to said weighing conveyor section;

said weighing conveyor section transporting said products at a speed faster than said product infeed conveyor to provide a desired product pitch for said products transported across said weigh pan; and

said weigh pan has a length in the direction of movement of said conveyor elements corresponding essentially to the length of said products, as measured in the direction of movement of said weighing conveyor section.

* * * * *