



US007212899B2

(12) **United States Patent**
Bates et al.

(10) **Patent No.:** **US 7,212,899 B2**
(45) **Date of Patent:** **May 1, 2007**

(54) **AUTOMATED TRANSMISSION SYSTEMS**

(75) Inventors: **Ian Richard Joseph Bates**,
Huddersfield (GB); **Burkhard Pollack**,
Bühl (DE); **In Ho Song**, Warwickshire
(GB); **Youngkeun Park**, Warwickshire
(GB); **Christian Rieger**, Bischweier
(DE)

4,771,657 A *	9/1988	Iwatsuki	477/93
5,079,708 A *	1/1992	Brown	701/72
5,105,923 A *	4/1992	Iizuka	192/220
5,510,707 A *	4/1996	Caron	324/166
6,078,851 A *	6/2000	Sugitani	701/34
6,498,474 B1 *	12/2002	Turner	324/165
6,747,553 B2 *	6/2004	Yamada et al.	340/441

(73) Assignee: **LuK Lamellen und Kupplungsbau**
Beteiligungs KG, Buehl (DE)

FOREIGN PATENT DOCUMENTS

(*) Notice: Subject to any disclaimer, the term of this
patent is extended or adjusted under 35
U.S.C. 154(b) by 0 days.

EP	0043660	*	4/1986
EP	0038113	*	7/1986
EP	0059035	*	1/1987
EP	0101220	*	1/1987
EP	0781946 A1	*	7/1987
EP	0784001 A2	*	7/1987
EP	0781946		9/2000
EP	0784001		7/2002
WO	WO 92/13208	*	8/1992
WO	WO 02/066870		8/2002
WO	WO02/066870210	*	8/2002
WO	WO02/085661		10/2002
WO	WO02/085661 A1	*	10/2002

(21) Appl. No.: **11/541,361**

(22) Filed: **Sep. 29, 2006**

(65) **Prior Publication Data**

US 2007/0043495 A1 Feb. 22, 2007

Related U.S. Application Data

(62) Division of application No. 10/758,804, filed on Jan.
16, 2004, now Pat. No. 7,123,998.

(30) **Foreign Application Priority Data**

Jan. 18, 2003 (GB) 0301171.5

(51) **Int. Cl.**
G06F 7/00 (2006.01)

(52) **U.S. Cl.** **701/51; 701/1; 701/70;**
477/37

(58) **Field of Classification Search** 701/1,
701/51, 52, 70; 324/161, 165; 477/37
See application file for complete search history.

(56) **References Cited**

U.S. PATENT DOCUMENTS

4,414,863 A * 11/1983 Heino 477/63

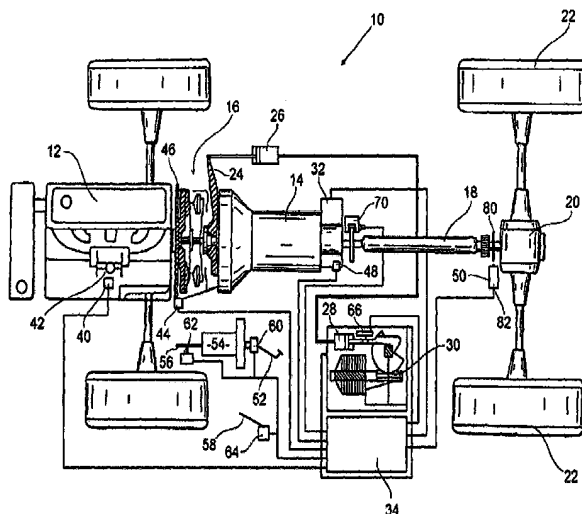
* cited by examiner

Primary Examiner—Gertrude A. Jeanglaude
(74) *Attorney, Agent, or Firm*—Simpson & Simpson, PLLC

(57) **ABSTRACT**

An automated transmission system includes a transmission
brake which is used to apply a braking torque to the
transmission, while the engine torque is negative and a
transmission clutch is disengaged to effect a gear downshift,
in order to avoid acceleration of the vehicle when the clutch
is released and abrupt deceleration of the vehicle upon
completion of the gear downshift.

18 Claims, 6 Drawing Sheets



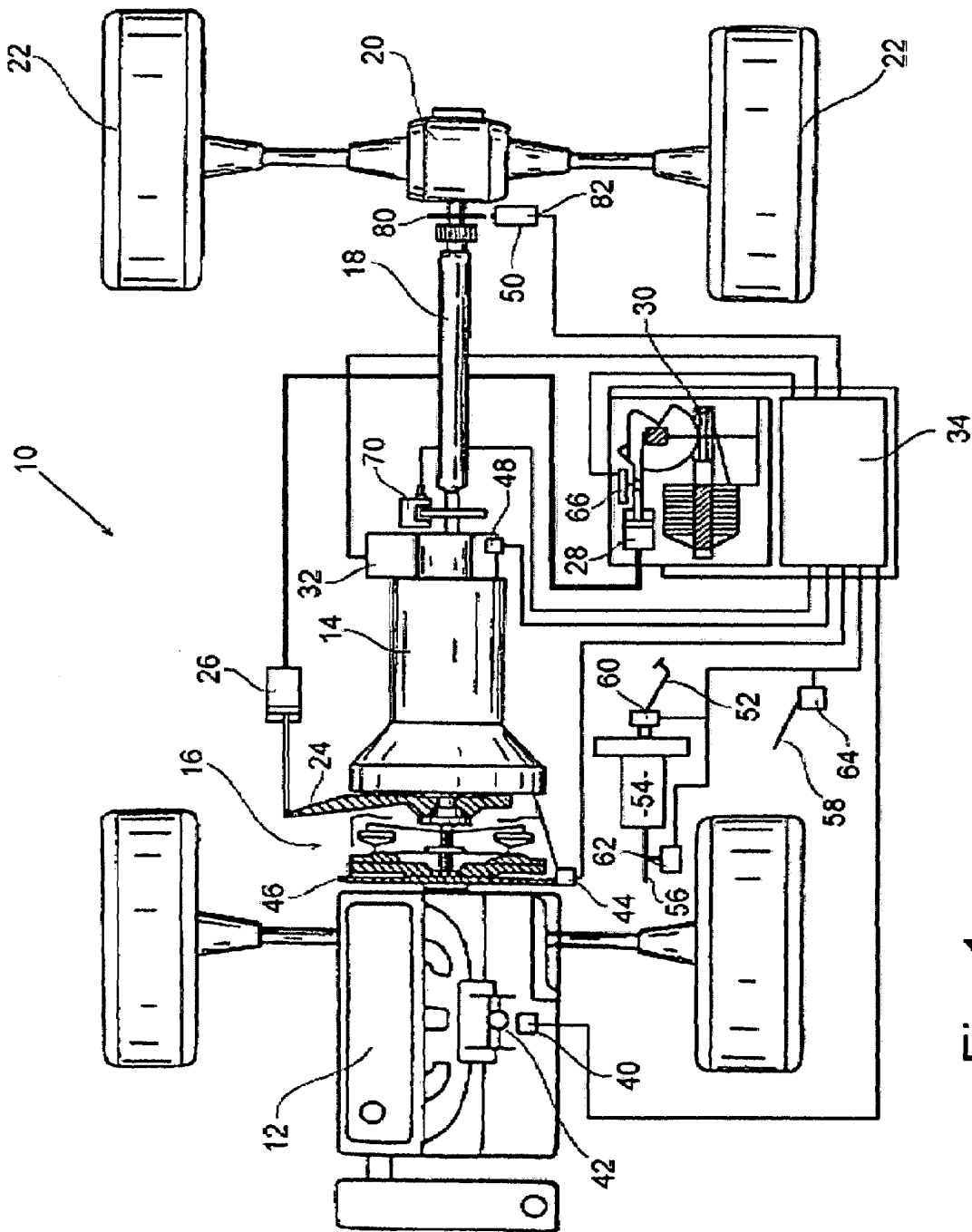


Fig. 1

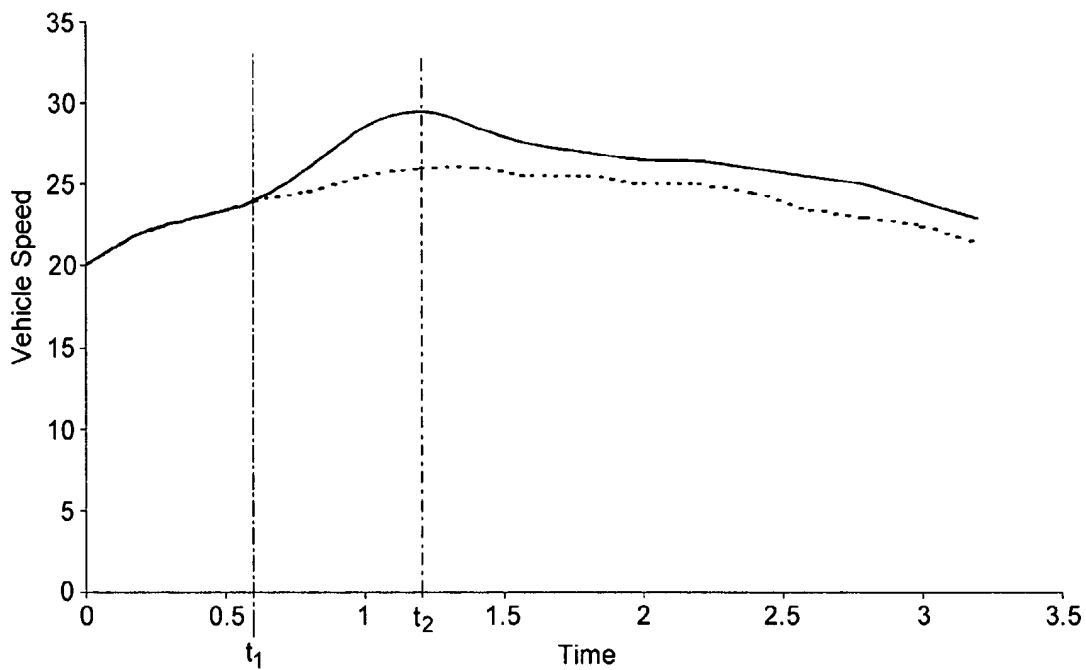


Fig 2.

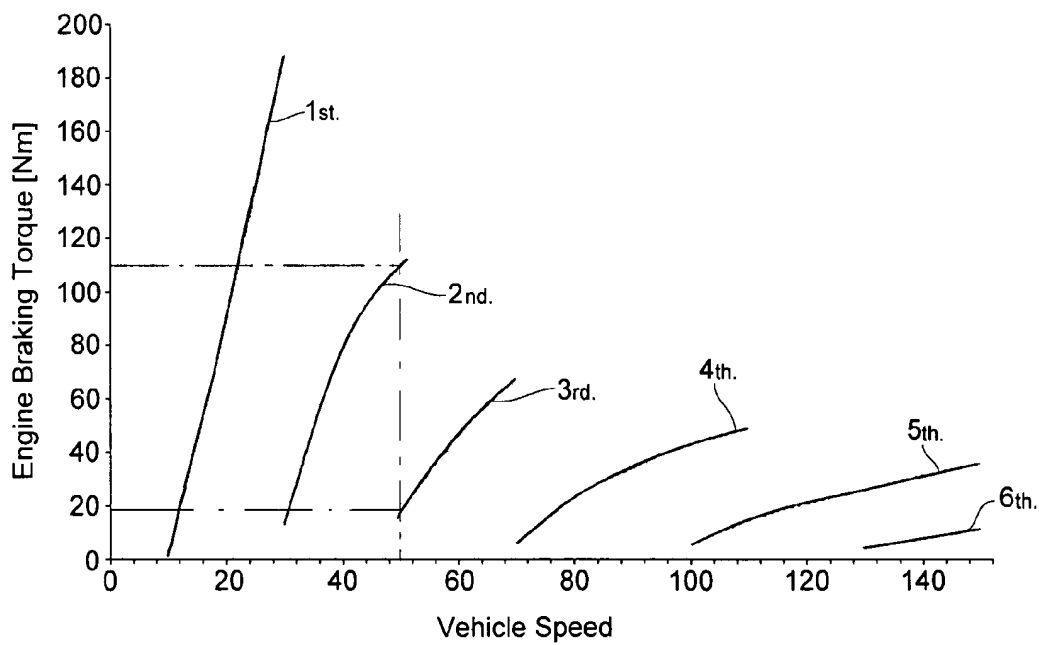


Fig 3.

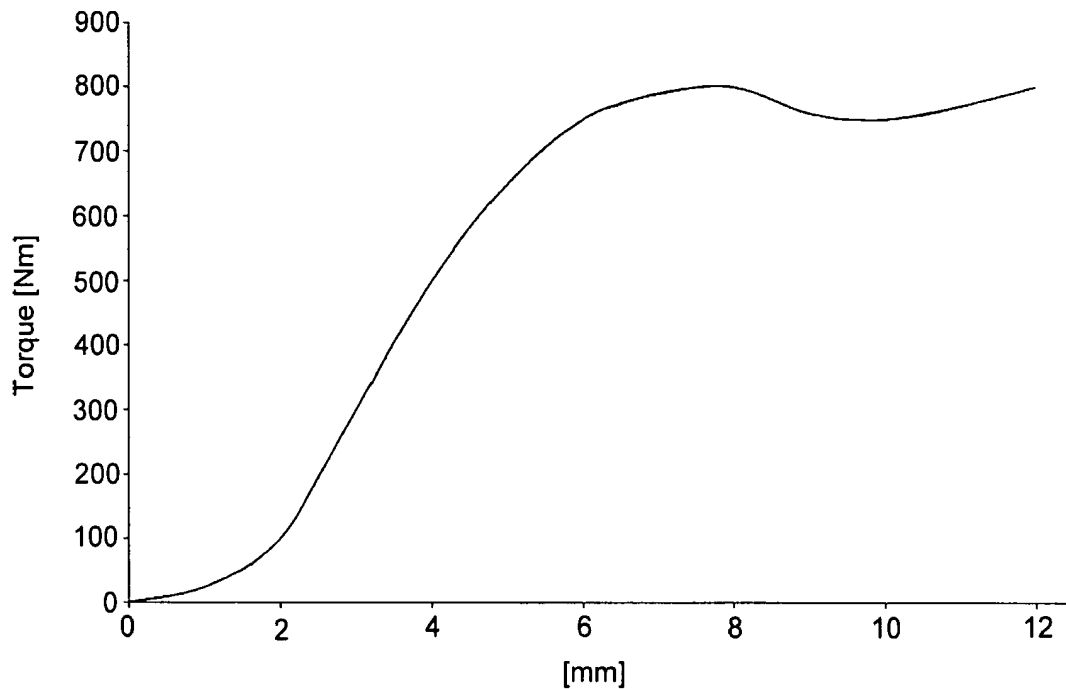


Fig 4

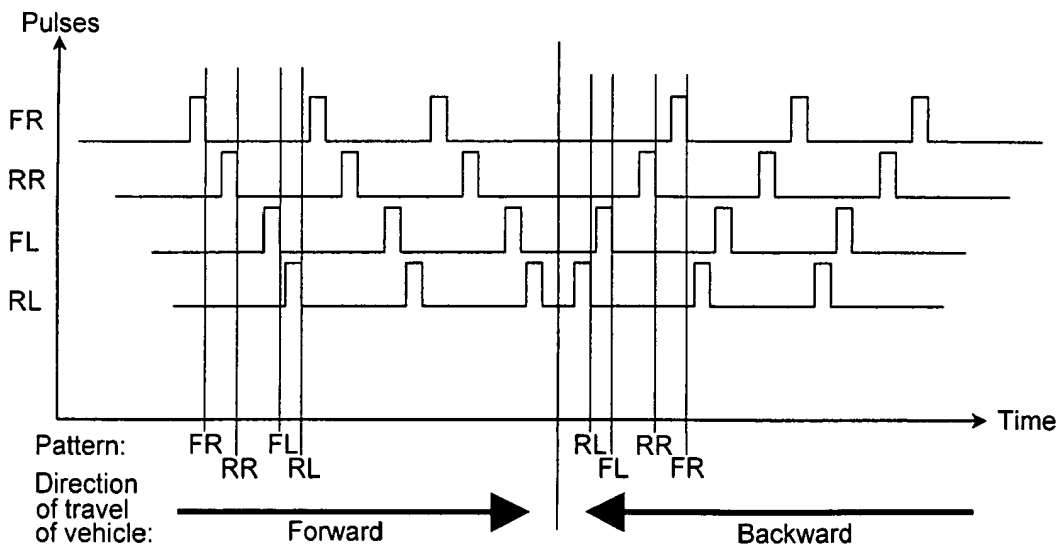


Fig 8

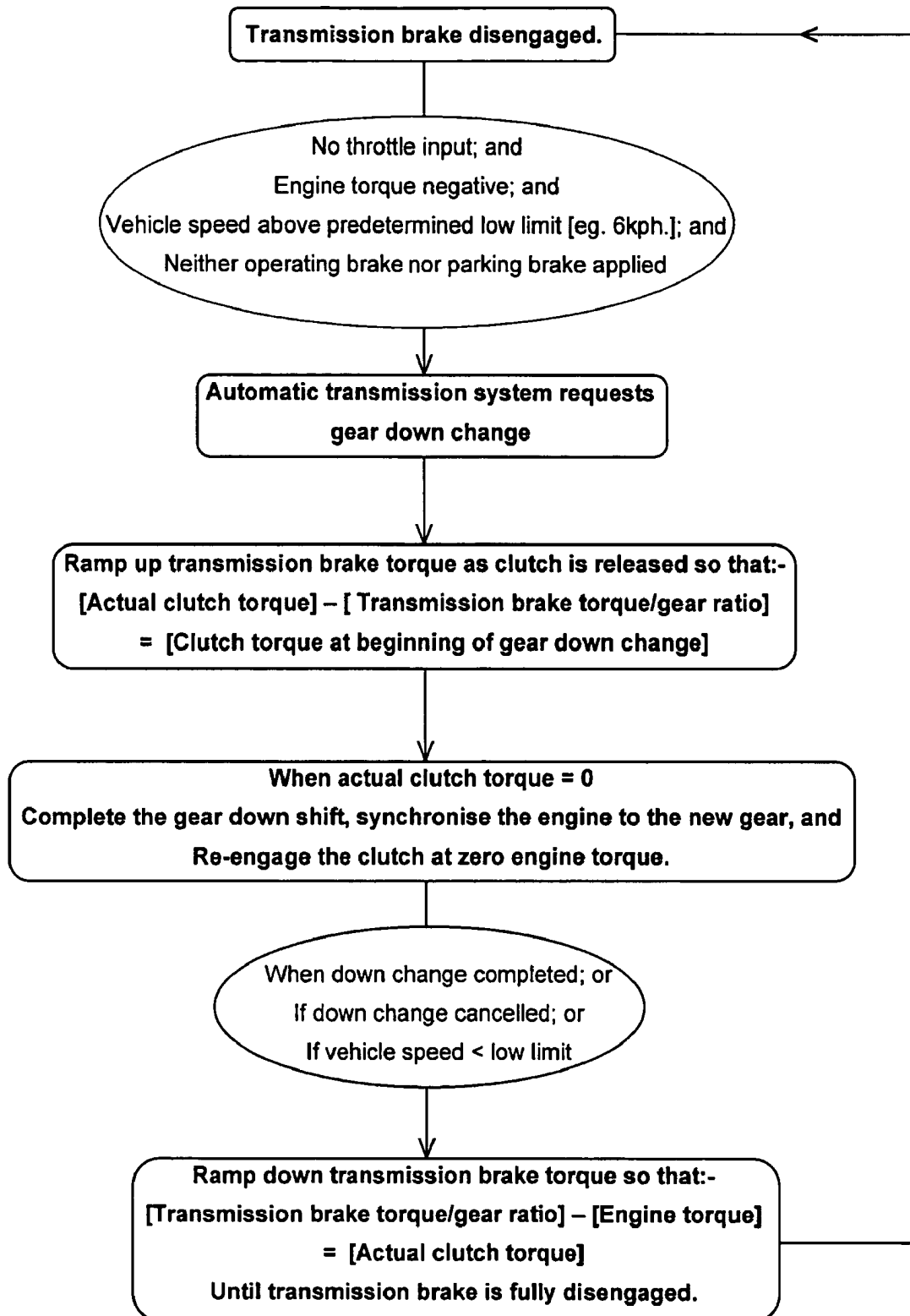


Fig 5

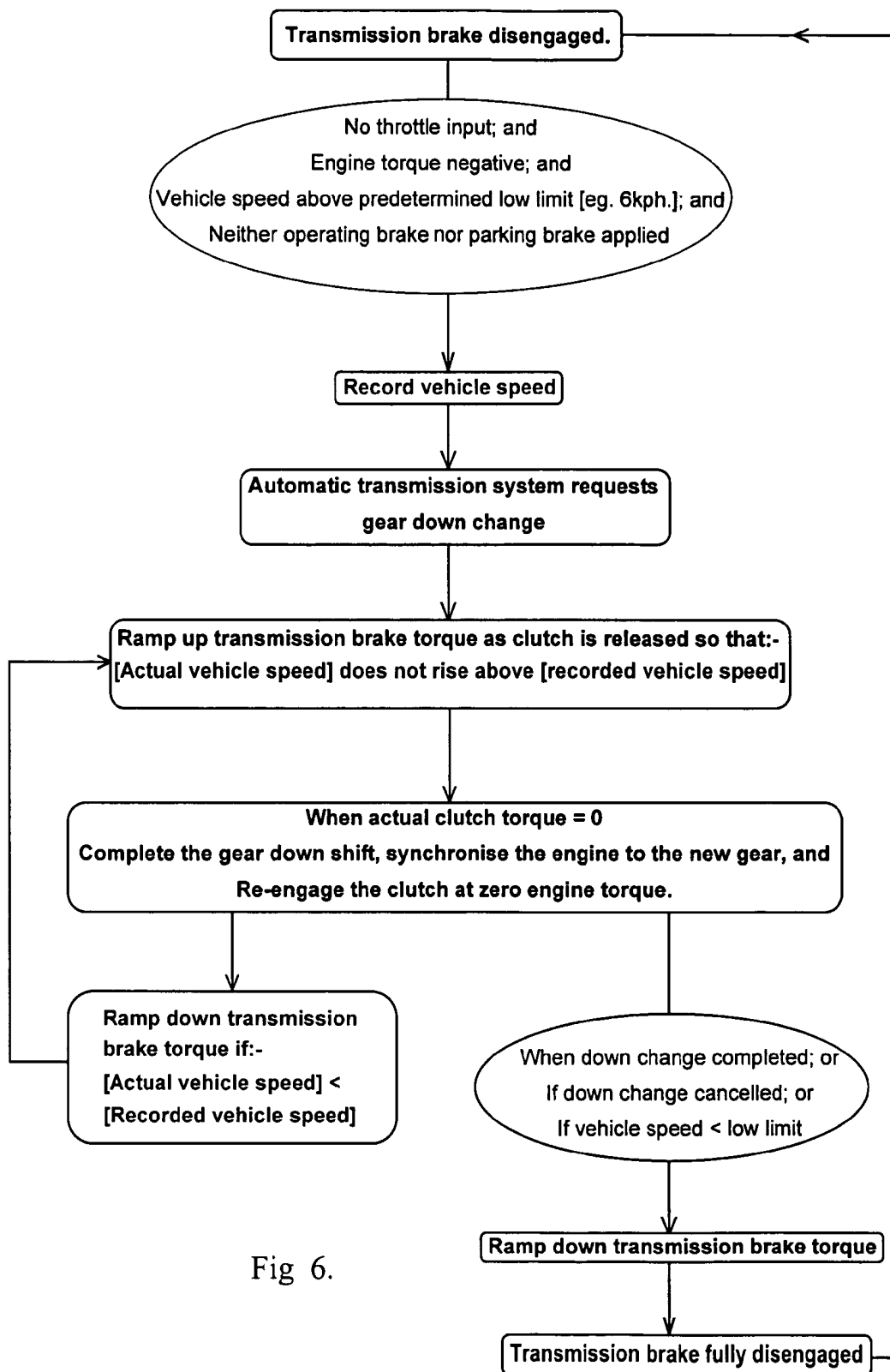


Fig 6.

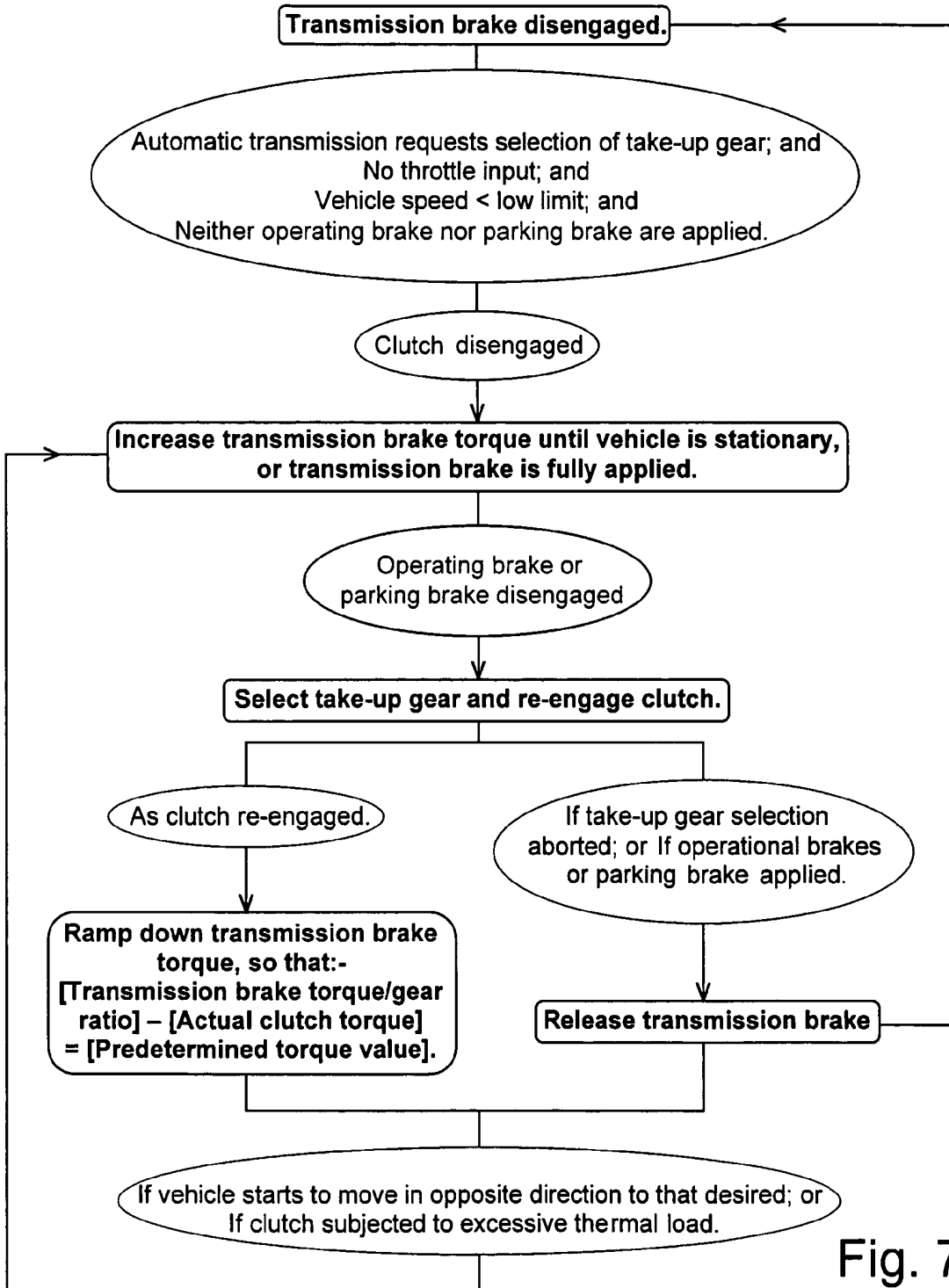


Fig. 7

1

AUTOMATED TRANSMISSION SYSTEMS

CROSS-REFERENCE TO RELATED APPLICATION

This application is a division of U.S. patent application Ser. No. 10/758,804, filed Jan. 16, 2004, now U.S. Pat. No. 7,123,998 which claims priority of United Kingdom Patent Application No. 0301171.5, filed Jan. 18, 2003, which application is incorporated herein by reference.

BACKGROUND OF THE INVENTION

The present invention relates to automated transmission systems and in particular to automated transmission systems in which an automatically operated transmission clutch is provided between a vehicle engine and a multi-ratio gear box.

The invention particularly relates to the control of such systems when gear downshifting on an incline, in order to provide engine braking of the vehicle. In such circumstances when the clutch is automatically released in order to permit engagement of a lower gear, engine braking which was applied in the higher gear will be lost, thus allowing the vehicle to speed up. In similar circumstances with a manual transmission, this would be expected and the driver can take appropriate action to mitigate the effect. However, with an automated transmission system, when the system downshifts automatically, without input from the driver, the acceleration of the vehicle will be unexpected and would be disconcerting to the driver.

BRIEF SUMMARY OF THE INVENTION

According to one aspect of the present invention an automated transmission system for a vehicle comprises a multi-ratio gear box connected to an engine by means of a transmission clutch, a transmission brake acting on a component of the transmission between the transmission clutch and the driven wheels of the vehicle, an electronic control unit, means for sensing actuation of the transmission brake and sending a signal indicative thereof to the control unit, means for sensing the engine torque and sending a signal indicative thereof to the control unit, means for sensing the vehicle speed and sending a signal indicative thereof to the control unit, means for sensing whether a gear downshift is requested or in operation and sending a signal indicative thereof to the control unit, and means for sensing whether an operating brake of the vehicle is applied and sending a signal indicative thereof to the control unit; characterized in that the control unit controls operation of the transmission brake to apply a braking torque to the transmission, if the engine torque is negative, the vehicle speed is above a predetermined value, a gear downshift has been requested or is in progress and the operational brakes of the vehicle are not applied.

In this manner as the clutch is released for the gear downshift, the engine braking torque lost may be replaced by application of a braking torque by the transmission brake. According to a preferred embodiment, means is also provided for monitoring the position of a clutch actuator and sending a signal indicative thereof to the control unit, the control unit applying the transmission brake so that the braking torque applied thereby matches the reduction in clutch torque, as the clutch is released.

According to an alternative embodiment, the control unit controls the transmission brake in order to maintain the vehicle speed constant during the gear downshift.

2

According to another aspect of the present invention, means are provided for detecting the direction of movement of a vehicle from rest. The means for detecting the direction of movement comprise a plurality of vehicle speed sensors, wherein each sensor produces a pulsed signal, the frequency of the pulses corresponding to the speed of the vehicle, characterized in that the pattern of pulses produced by the sensors upon movement of the vehicle are compared to the pattern of pulses when the vehicle last came to rest, to determine the direction of movement of the vehicle.

BRIEF DESCRIPTION OF THE DRAWINGS

The invention is now described, by way of example only, with reference to the following drawings, in which:

FIG. 1 illustrates diagrammatically a vehicle with an electric motor driven clutch actuator;

FIG. 2 shows a plot of vehicle speed against time, during a gear downshift, while the vehicle is under engine braking;

FIG. 3 shows a typical plot of effective engine braking torque for each gear;

FIG. 4 is a typical plot of clutch torque against clutch actuator movement;

FIG. 5 is a flow diagram illustrating a gear downshift with one embodiment of the transmission system illustrated in FIG. 1;

FIG. 6 is a flow diagram illustrating a gear downshift with an alternative embodiment of the transmission system illustrated in FIG. 1;

FIG. 7 is a flow diagram illustrating starting of the vehicle from rest on an incline with the transmission system illustrated in FIG. 1; and,

FIG. 8 is a plot showing the pulses received from vehicle speed sensors associated with each of the wheels of a vehicle.

DETAILED DESCRIPTION OF THE PREFERRED EMBODIMENT

As illustrated in FIG. 1, a vehicle 10 has an internal combustion engine 12, which is connected to a gearbox 14 via a clutch 16. The gearbox 14 is connected by a drive shaft 18 and rear axle 20 to drive the rear wheels 22 of the vehicle 10.

The clutch 16 is operated by a release fork 24, which is operated by a hydraulic slave cylinder 26, under the control of a master cylinder 28, driven by an electric motor 30. Alternatively the clutch slave cylinder may be selectively connected to a source of hydraulic fluid under pressure or the drain via control valve means. According to alternative embodiments, the clutch release lever may be operated by pneumatic means or electromechanical means, the electromechanical means being connected to the release lever, either directly or by cable means.

The gearbox 14 is provided with gear engagement means 32, for example as disclosed in WO 02/066870, the disclosure content of which is incorporated into the disclosure content of the present application by reference thereto, by which engagement of a selected gear may be controlled by hydraulic, pneumatic or electromechanical means.

The electric motor 30 and gear engagement means 32 are controlled by means of an electronic control unit 34. A sensor 40 monitors throttle means 42 of the engine 12 and sends a signal indicative of the degree of throttle opening, to the control unit 34. A sensor 44 monitors the speed of rotation of a flywheel 46 of the engine 12 and sends a signal indicative of the engine speed, to the control unit 34. The

3

gear box 14 is provided with a gear sensor 48 which sends a signal indicative of the engaged gear, to the control unit 34. A sensor 50 monitors the speed of rotation of the drive shaft 18 and sends a signal indicative of the vehicle speed, to control unit 34. A sensor 66 monitors the position of clutch master cylinder 28 and sends a signal indicative of the clutch position to the control unit 34.

A main or operating braking system of the vehicle, includes a brake pedal 52 which operates a master cylinder 54 which is connected to slave cylinders associated with each of the wheels 22 of the vehicle by means of hydraulic circuit 56. A parking or hand brake 58 is also provided, by which brakes associated with one or more of the wheels 22 may be applied when the vehicle is stationary. A sensor 60, for example a brake light switch, associated with the brake pedal 52; and/or a pressure sensor 62 which measures pressure in the braking circuit 56; and sensor 64 associated with the hand brake 58, send signals to the control unit 34, indicative of actuation of the operating brake or hand brake respectively.

With the transmission system disclosed above, the control unit 34 utilizes the signals from the various sensors to automatically control actuation of the clutch 16 and engagement and disengagement of the gears, during take-up from rest, changes from on gear to another and on coming to rest, as for example described in patent specifications EP0038113; EP0043660; EP0059035; EP101220; WO92/13208; and WO 02/066870 to the disclosure of which explicit reference is made and whose content is expressly incorporated in the disclosure content of the present application.

When a vehicle is traveling down hill, the speed of the vehicle may be controlled using engine braking. As illustrated in FIG. 3, the effective engine braking torque for a given vehicle speed will depend on the gear engaged. Furthermore, there may be a significant braking torque difference between one gear and another, at a given vehicle speed, for example as illustrated in FIG. 3 a downshift from third to second gear at 50 kph will increase to engine braking torque from 20 Nm to 110 Nm. Consequently there may be an abrupt change in deceleration upon a gear downshift. Additionally when the clutch is released to change gear the vehicle may initially speed up, due to loss of engine braking while the clutch is disengaged. FIG. 2 shows (in full line) a typical plot of vehicle speed against time, during a gear downshift, when a vehicle is traveling down hill, the vehicle accelerating when the clutch 16 is released at time t_1 and decelerating abruptly when the clutch 16 is re-engaged at time t_2 . The effects experienced in such circumstances are not a problem with manual transmissions, when the downshift is initiated by the driver, who will consequently be alert to the possible effects. However, if downshift is to be initiated automatically such effects would be unexpected and be disconcerting to the driver.

In accordance with the present invention, a transmission brake 70 is provided on the drive shaft 18. This transmission brake 70 is operated, hydraulically, pneumatically or by electromechanical means, under the control of the control unit 34, as described in greater detail below, in order to blend the clutch torque and transmission brake torque during the gear downshift, in order to mitigate the effects.

As illustrated by FIG. 5, if the signals from sensors 40, 44, 50, 60, 62 and 64 indicate that there is no throttle input, the engine torque is negative, the vehicle speed is above a predetermined low limit, typically 6 kph, and neither the operating brake or parking brake are applied, then depending on the vehicle speed, the control unit may initiate a gear

4

downshift. As the clutch 16 is released, the control unit 34 controls application of the transmission brake 70, so that the braking torque applied by the transmission brake 70 matches the reduction in clutch torque. This may be achieved using a map of clutch torque against position, as measured by sensor 66, as illustrated in FIG. 4, and a corresponding map of transmission brake torque against brake position or pressure in the transmission brake circuit.

Once the clutch 16 is fully disengaged, the currently engaged gear is disengaged, the engine is synchronized to the new gear, the new gear is engaged and the clutch 16 is re-engaged at zero engine torque. Upon completion or cancellation of the downshift; or if the vehicle speed falls below the predetermined low limit; or the operating brakes or hand brake are applied; the control unit 34 reduces the torque applied by the transmission brake 70, to provide a smooth transfer of torque between the brake 70 and clutch 16, so that the braking torque applied by the transmission brake is replaced by engine braking torque, without any abrupt deceleration.

According to an alternative embodiment of the invention, the control unit 34 may reduce the braking torque applied by the transmission brake 70, as the clutch torque increases. This may be achieved using the torque maps of the clutch 16 and transmission brake 70, as referred to above.

According to a further embodiment of the invention, as illustrated in FIG. 6, if the control unit 34 decides to initiate a gear downshift, using the criteria disclosed above, the road speed immediately before initiation of the gear downshift is recorded and the control unit 34 operates the transmission brake 70 to apply sufficient braking torque to prevent the vehicle speed rising above the recorded speed, this may be done using a closed feedback loop.

Upon completion or cancellation of the gear downshift; or if the vehicle speed is less than the predetermined value; or if the vehicle speed is less than the recorded value; or if the operating brakes or hand brake are applied, then the control unit 34 reduces the torque applied by the transmission brake 70. Again the braking torque applied by the transmission brake 70 will be reduced in controlled manner so that there is a smooth transition between braking by the transmission brake 70 and engine braking. If during the reduction of braking torque applied by the transmission brake 70, the vehicle speed increases above the recorded vehicle speed and, the gear downshift has not been cancelled; or the vehicle speed has not fallen below the predetermined value; or the operating brakes or hand brake have not been applied, then the control unit 34 may increase the braking torque applied by the transmission brake 70, to reduce the speed of the vehicle to below the recorded value.

Using the above methods, the transmission brake 70 may be used to prevent acceleration of the vehicle upon disengagement of the clutch 16 and to provide a smooth deceleration of the vehicle, upon completion of the gear downshift, as illustrated in broken line, in FIG. 2 of the drawings.

The transmission brake 70 of the present invention may furthermore be used to assist in start-up of the vehicle on an incline, as illustrated in FIG. 6 of the drawings. When starting a vehicle on an incline with an automated transmission system of the type disclosed above, upon release of the clutch 16 to select a take-up gear, if the operating brakes or parking brake of the vehicle are not applied, the vehicle may start to roll down hill in the direction opposite to that desired. In order to address this problem, it has been proposed to initiate a creep mode which involves selection of a take-up gear and partial engagement of the clutch to apply a predetermined clutch torque, prior to release of the parking brake

or operating brakes of the vehicle. On, for example, steep inclines or where there is delay in actuation of the throttle to drive away, this can cause excessive clutch slippage leading to high thermal loads and clutch wear. Similar problems will arise if the driver attempts to hold the vehicle on an incline, by manipulation of the throttle.

With the transmission according to the present invention, the control unit 34 may control the transmission brake 70 at start-up to apply a braking torque, which will hold the vehicle, thereby replacing all, or a proportion of the clutch torque. For example, as illustrated in FIG. 7, if control unit 34 requests selection of a take-up gear and the signals from sensors 40, 44, 50, 60, 62 and 64 indicate that there is no throttle input; the vehicle speed is below a predetermined low limit indicating that the vehicle is at rest; and either the operating brake or parking brake are applied, then the control unit 34 may apply the transmission brake 70, so that the transmission brake 70 will hold the vehicle on an incline. The application of the transmission brake 70 may be controlled by control unit 34, so that the braking torque applied by the transmission brake 70 increases, as the clutch 16 is released, in order to permit selection of a take-up gear. Alternatively the transmission brake 70 may be applied, under control of the control unit 34, as the parking brake or operating brakes of the vehicle are released after selection of a start-up gear.

Once the take-up gear has been selected control unit 34 re-engages the clutch 16. At the same time, control unit 34 reduces the braking torque applied by transmission brake 70, so that the effective torque applied by the clutch 16 and transmission brake 70 are sufficient to hold the vehicle on the incline. This may be achieved by reducing the torque applied by the transmission brake 70 as the torque applied by the clutch 16 increases so that the overall torque equates to the predetermined torque value applied by the clutch only, in systems proposed hitherto, to induce a creep mode. Alternatively the control unit 34 may control release of the transmission brake 70, using closed loop feedback systems, which monitor, for example, movement of the vehicle in the reverse direction to that desired and/or thermal loading of the clutch 16.

The control unit 34 will also control the transmission brake 70, to reduce the braking torque thereof, if the throttle is actuated to drive the vehicle away, or if the parking brake or operational brakes of the vehicle are not released or are re-applied.

The sensor 50 comprises a toothed wheel 80 which is mounted for rotation with the drive shaft 18. An inductive pickup 82 is positioned in juxtaposed relationship to the teeth of wheel 80. As the toothed wheel 80 rotates, the pickup 82 produces a pulsed signal, the frequency of signal being proportional to the speed of rotation of the wheel 80. According to an alternative embodiment of the invention, the pickup 82 may be replaced by a plurality of similar pickups, each pickup being associated with a different wheel of the vehicle. Such pickups may form part of an anti-lock braking system. The toothed wheels 80 of the pickups being similar, the pulsed signals produced by each of the pickups will be of the same frequency, but the pulses will be out of phase, as illustrated in FIG. 8. As the wheels 22 of the vehicle are generally rotating at the same speed, particularly when the vehicle speed is low, the pattern of pulses of the four signals will remain substantially constant, at least in the short term. The pattern will however reverse depending to the direction of travel of the vehicle, as illustrated in FIG. 8. The use of multiple sensors 50 may consequently be used,

for example, to determine whether the vehicle is moving in the opposite direction to that desired, when the vehicle is starting on an incline.

In order to achieve this, the pattern of pulses produced by two or more sensors 50 is recorded as the vehicle comes to rest and is compared with the pattern of pulses when the vehicle next starts-up from rest.

It should be noted that the plurality of sensors 50 need not be associated with different wheels of the vehicle, but may be associated with the same component, for example the drive shaft 18, provided that the teeth on the wheels 80 of the sensors are angularly misaligned, so that the pulses of the signals produced by the sensors will be out of phase. Alternatively a sensor having a single toothed wheel 80 with two pickups 82, one offset from the other, so as to produce two pulsed signals, the pulses of which are out of phase, may be used. Where only two signals are used, the pulses of one signal must be offset from those of the other signal by less than half the frequency of the pulses. In this manner it is ensured that there will be a reversal in the pattern, upon reversal of the direction of motion of the vehicle. For example if only sensors FR and RR are used in FIG. 8, then for rotation in one direction, there is a short gap between successive pulses from sensors FR and RR and a long gap between successive pulses from sensors RR and FR, while for rotation in the opposite direction there is a long gap between successive pulses from sensors FR and RR and a short gap between successive pulses from sensors RR and FR. With four sensors, on reversal, there is a change in sequence of the pulses from the four sensors, for example from FR:RR:FL:RL to RL:FL:RR:FR.

The patent claims submitted with the application are proposed formulations without prejudice to the achievement of further patent protection. The applicant reserves the right to submit claims for further combinations of characteristics, previously only disclosed in the description and/or drawings.

References back used in sub-claims refer to the further development of the subject of the main claim by the characteristics of the respective sub-claim; they are not to be understood as a waiver with regard to achieving independent item protection for the combination of characteristics in the related sub-claims.

Since the subject of the sub-claims can form separate and independent inventions with reference to the prior art on the priority date, the applicant reserves the right to make them the subject of independent claims or of division declarations. Furthermore, they may also contain independent inventions, which demonstrate a design, which is independent of one of the objects of the preceding sub-claims.

The embodiments are not to be considered a restriction of the invention. Rather, a wide range of amendments and modifications is possible within the scope of the current disclosure, especially those variations, elements and combinations and/or materials which, for example, the expert can learn by combining individual ones together with those in the general description and embodiments in addition to characteristics and/or elements or process stages described in the claims and contained in the drawings with the aim of solving a task thus leading to a new object or new process stages or sequences of process stages via combinable characteristics, even where they concern manufacturing, testing and work processes.

What is claimed is:

1. An automated transmission for a vehicle comprising a multi-ratio gear box connected to an engine by means of a transmission clutch, a transmission brake acting on a com-

ponent of the transmission between the transmission clutch and the driven wheels of the vehicle, an electronic control unit, means for sensing actuation of the transmission brake and sending a signal indicative thereof to the control unit, means for sensing the engine torque and sending a signal indicative thereof to the control unit, means for sensing the vehicle speed and sending a signal indicative thereof to the control unit, means for sensing whether a gear downshift is requested or in operation and sending a signal indicative thereof to the control unit, and means for sensing whether an operating brake of the vehicle is applied and sending a signal indicative thereof to the control unit; characterized in that the control unit controls operation of the transmission brake to apply a braking torque to the transmission, if the engine torque is negative, the vehicle speed is above a predetermined value, a gear downshift has been requested or is in progress and the operational brakes of the vehicle are not applied.

2. An automated transmission system according to claim 1 wherein the transmission is operatively arranged such that when the transmission brake is applied, as the clutch is released, torque applied by the transmission brake replaces the loss of engine braking as the clutch is released.

3. An automated transmission system according to claim 1 wherein the transmission brake is operatively arranged to be applied to prevent the speed of the vehicle rising above a vehicle speed value attained when a gear downshift was initiated.

4. An automated transmission system according to claim 3 wherein the speed of the vehicle when a gear downshift is initiated is recorded by the control unit.

5. An automated transmission system according to claim 3 wherein the transmission brake is operatively arranged to be released to permit the vehicle to accelerate to the value of the speed of the vehicle when a gear downshift was initiated, if the speed of the vehicle falls significantly below said value, during a gear downshift.

6. An automated transmission system according to claim 1 wherein when the torque transmitted by the clutch is reduced to zero, the gear shift is completed, the engine speed is synchronized to the new gear and the clutch is re-engaged.

7. An automated transmission system according to claim 6 wherein upon re-engagement of the clutch, the torque applied by the transmission brake is ramped down until the transmission brake torque is zero.

8. An automated transmission system according to claim 7 wherein the transmission brake torque is ramped down to provide a smooth deceleration of the vehicle.

9. An automated transmission system according to claim 8 wherein the transmission brake torque is ramped down as the clutch is re-engaged, and the decrease in torque applied by the transmission brake tracks the increase in torque transmitted by the clutch.

10. An automated transmission system according to claim 8 wherein the torque applied by the transmission brake divided by the ratio of the gear engaged, minus the engine torque equals the actual torque transmitted by the clutch.

11. An automated transmission system according to claim 3 wherein the transmission brake is operatively arranged to hold the vehicle when starting-up from rest on an incline.

12. An automated transmission system according to claim 11 wherein the transmission brake is applied when the control unit requests selection of a take-up gear; the vehicle throttle sensor indicates that there is no throttle input; the vehicle speed sensor indicates that the vehicle speed is below a predetermined low limit; and brake sensors indicate that neither the operating brake nor parking brake are applied.

13. An automated transmission system according to claim 12 wherein the torque applied by the transmission brake is increased at a rate which substantially matches the decrease in torque transmitted by the clutch, as the clutch is released to permit selection of the take-up gear.

14. An automated transmission system according to claim 11 wherein upon selection of a take-up gear, the clutch is disengaged and the transmission brake is released.

15. An automated transmission system according to claim 14 wherein the torque applied by the transmission brake is reduced so that the torque applied by the transmission brake divided by the ratio of the gear engaged, minus the actual torque transmitted by the clutch equals a predetermined torque value.

16. An automated transmission system according to claim 11 wherein the transmission brake is released if the throttle is actuated, the take-up gear selection is aborted and/or if the operational brake or parking brake are applied.

17. An automated transmission system according to claim 11 wherein the torque applied by the transmission brake is increased, if movement of the vehicle in the opposite direction to that desired is detected.

18. An automated transmission system according to claim 17 wherein movement of the vehicle in the opposite direction to that desired is detected by means of a plurality of vehicle speed sensors, the speed sensors each producing a pulsed signal, the frequency of the pulses corresponding to the speed of the vehicle, the pattern of pulses produced by the vehicle speed sensors on start-up of the vehicle being compared with the pattern of pulses when the vehicle last came to rest.

* * * * *