



US009476490B2

(12) **United States Patent**  
**Ersahin et al.**

(10) **Patent No.:** **US 9,476,490 B2**

(45) **Date of Patent:** **Oct. 25, 2016**

(54) **EXTENDED TURBINE BLADE**

(56) **References Cited**

(71) Applicant: **Schaeffler Technologies AG & Co. KG**, Herzogenaurach (DE)

U.S. PATENT DOCUMENTS

(72) Inventors: **Cem Ersahin**, Copley, OH (US); **Todd J. Sturgin**, Wooster, OH (US)

2,140,106	A *	12/1938	Cox et al.	60/367
2,263,996	A *	11/1941	Kimberly, Jr.	60/365
2,428,134	A *	9/1947	Zeidler	415/141
3,023,582	A *	3/1962	Ryan	60/338
3,891,350	A *	6/1975	Adachi et al.	416/180
6,334,307	B1 *	1/2002	Iwao et al.	60/367
6,360,533	B1	3/2002	Turner et al.	
6,886,330	B1	5/2005	Turner	
2008/0247878	A1 *	10/2008	Saitou	416/180
2009/0282821	A1 *	11/2009	Kombowski	60/330

(73) Assignee: **Schaeffler Technologies AG & Co. KG**, Herzogenaurach (DE)

(\*) Notice: Subject to any disclaimer, the term of this patent is extended or adjusted under 35 U.S.C. 154(b) by 569 days.

FOREIGN PATENT DOCUMENTS

(21) Appl. No.: **13/715,049**

JP	07-004496	*	1/1995	F16H 41/28
JP	09-042413	*	7/1995	F16H 41/28

(22) Filed: **Dec. 14, 2012**

\* cited by examiner

(65) **Prior Publication Data**

US 2013/0160438 A1 Jun. 27, 2013

*Primary Examiner* — Michael Leslie

*Assistant Examiner* — Matthew Wiblin

**Related U.S. Application Data**

(60) Provisional application No. 61/579,879, filed on Dec. 23, 2011.

(74) *Attorney, Agent, or Firm* — Simpson & Simpson, PLLC

(51) **Int. Cl.**

**F16H 41/26** (2006.01)

**F16D 33/20** (2006.01)

(52) **U.S. Cl.**

CPC ..... **F16H 41/26** (2013.01); **F16D 33/20** (2013.01)

(57) **ABSTRACT**

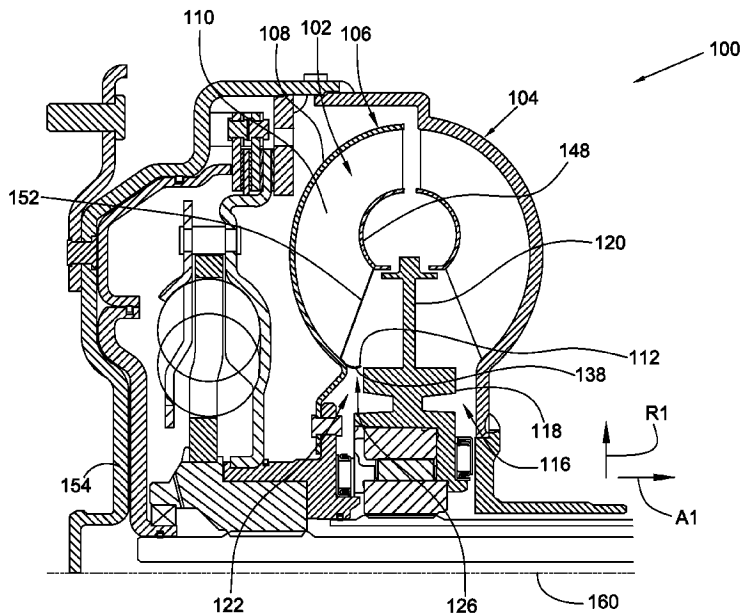
A torque converter, including: an impeller and a turbine with: a shell; and at least one blade including: a blade body with a first edge connected to the shell; and a portion extending from the blade body. The torque converter includes a stator including: a stator body, and at least one stator blade axially disposed between the impeller and the turbine and connected to the stator body. A circumferential space is formed between the turbine shell and the stator body. At least a portion of the circumferential space is radially aligned with the portion of the at least one blade.

(58) **Field of Classification Search**

CPC ..... F16D 33/20; F16H 41/26  
USPC ..... 60/361, 362, 364, 365, 366; 416/1, 180, 416/197 C

See application file for complete search history.

**10 Claims, 7 Drawing Sheets**



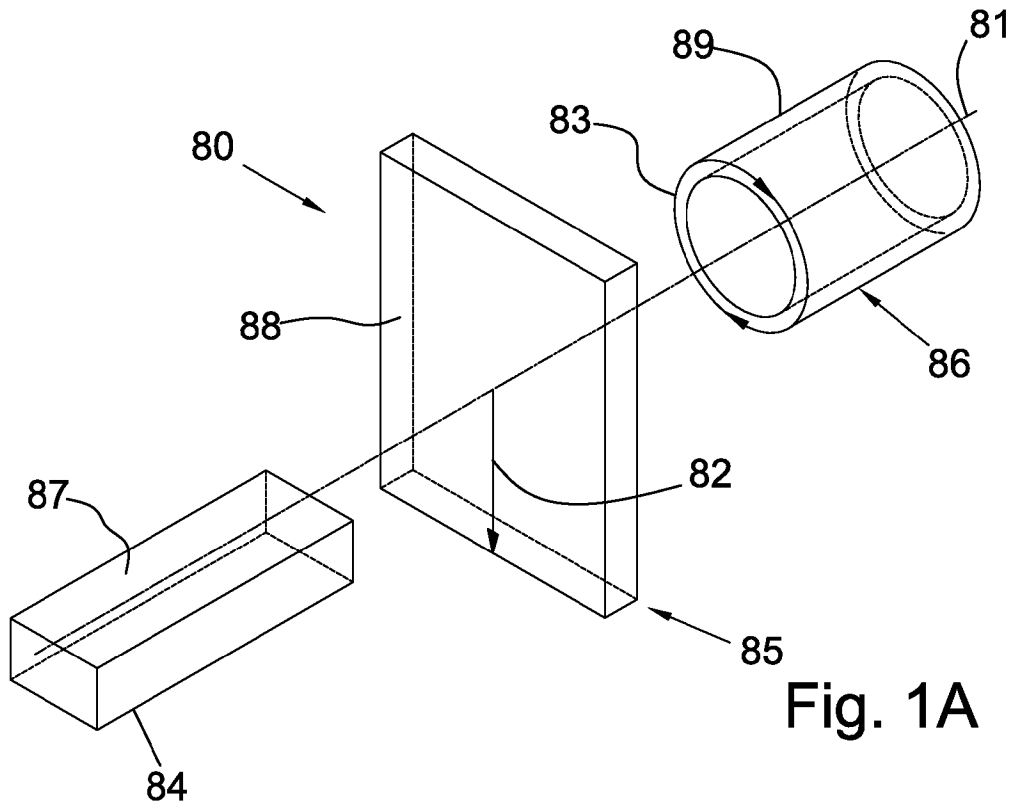


Fig. 1A

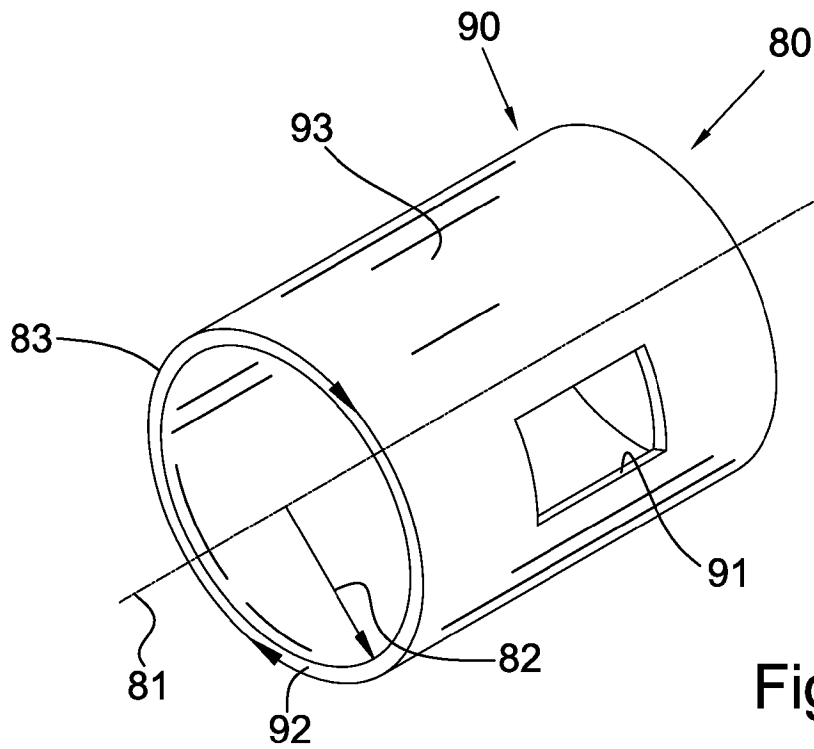


Fig. 1B

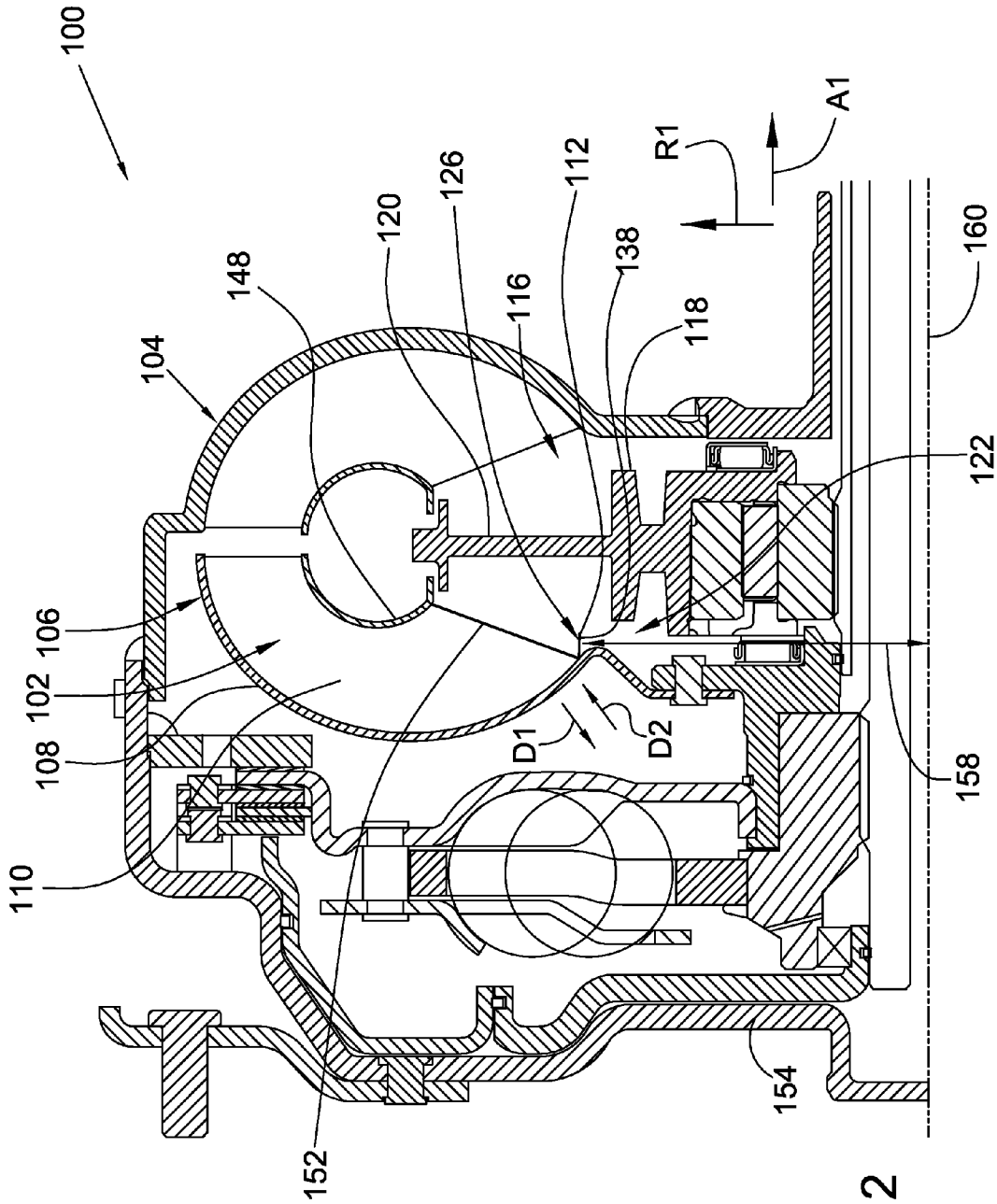


Fig. 2

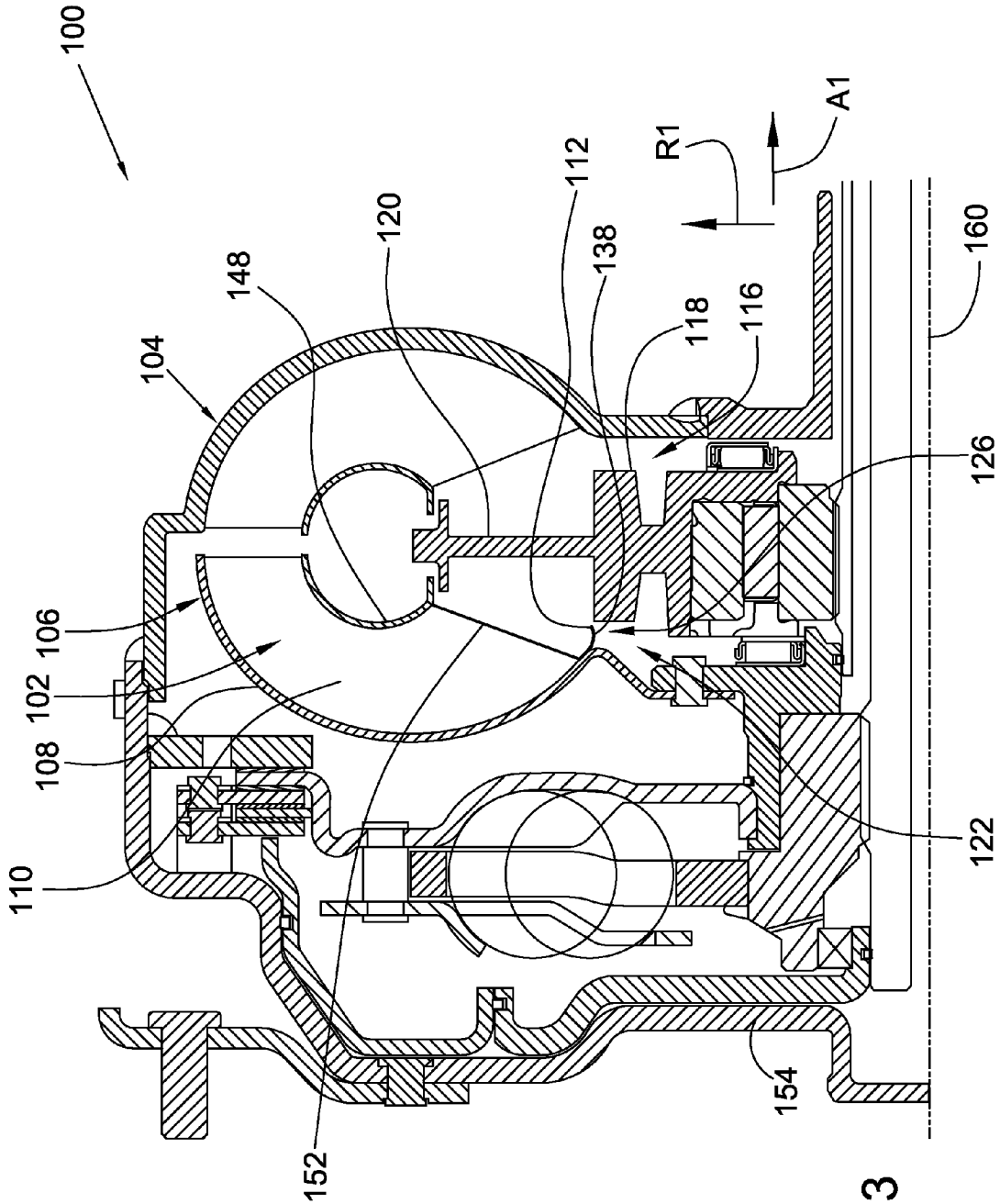


Fig. 3

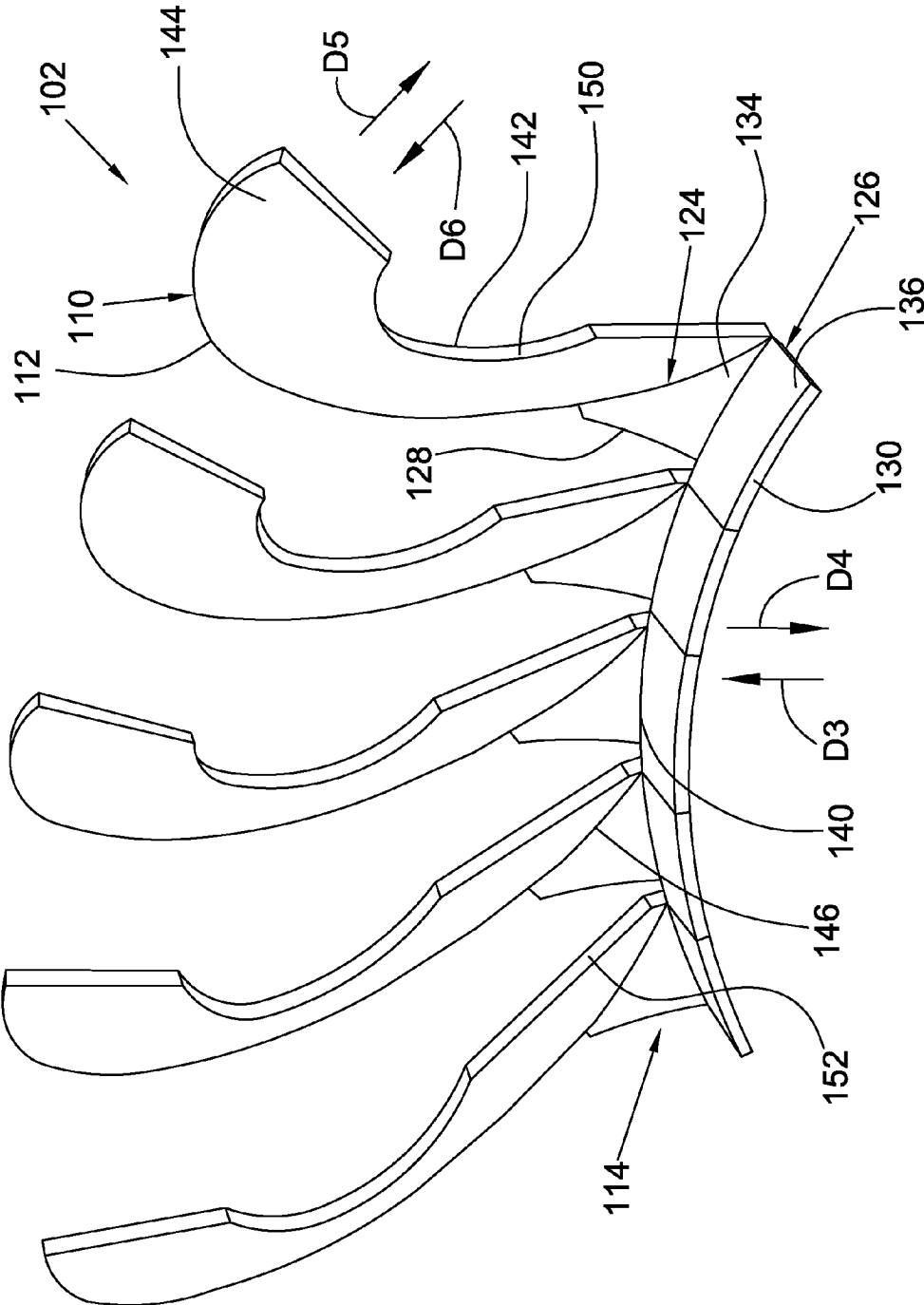


Fig. 4

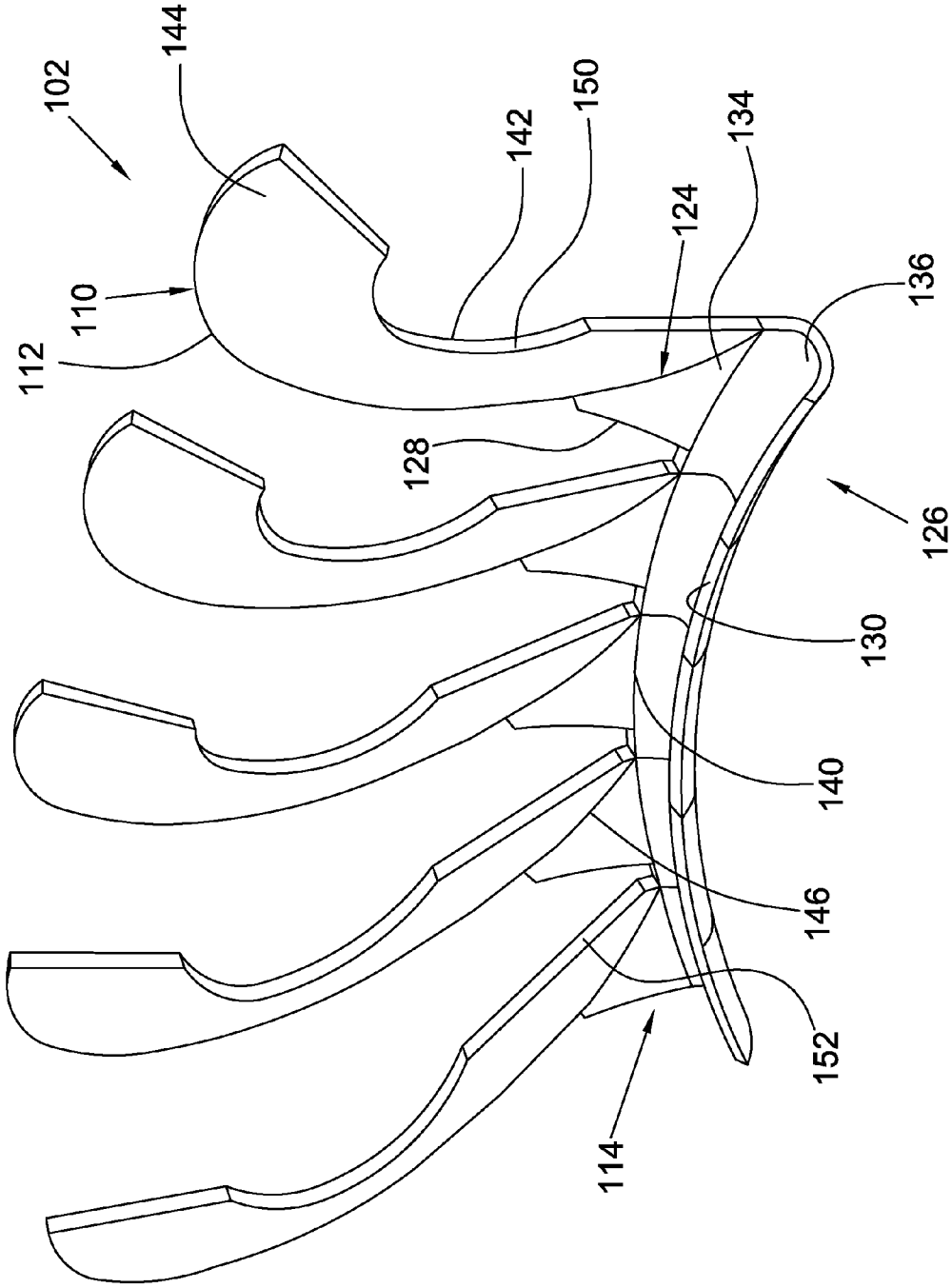
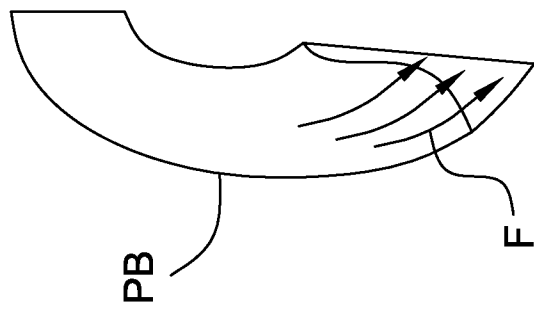


Fig. 5



PRIOR ART

Fig. 6A

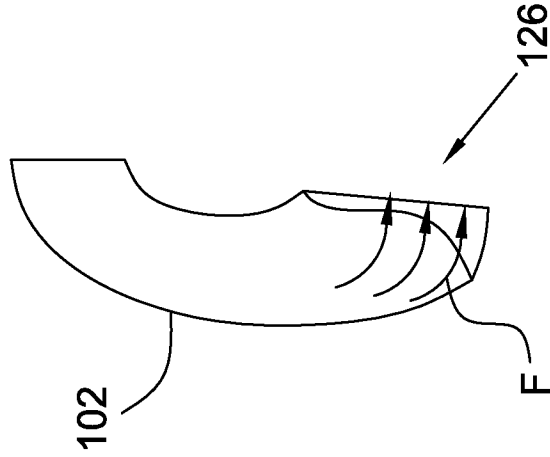


Fig. 6B

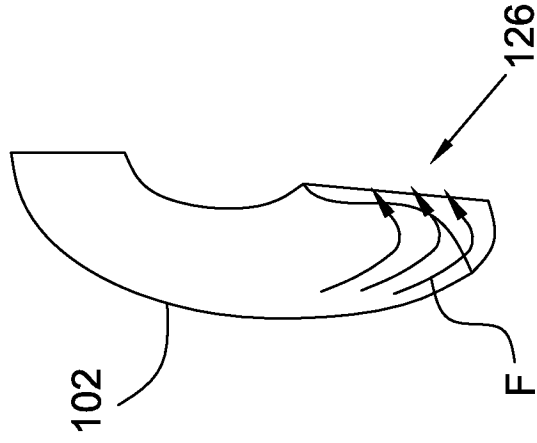
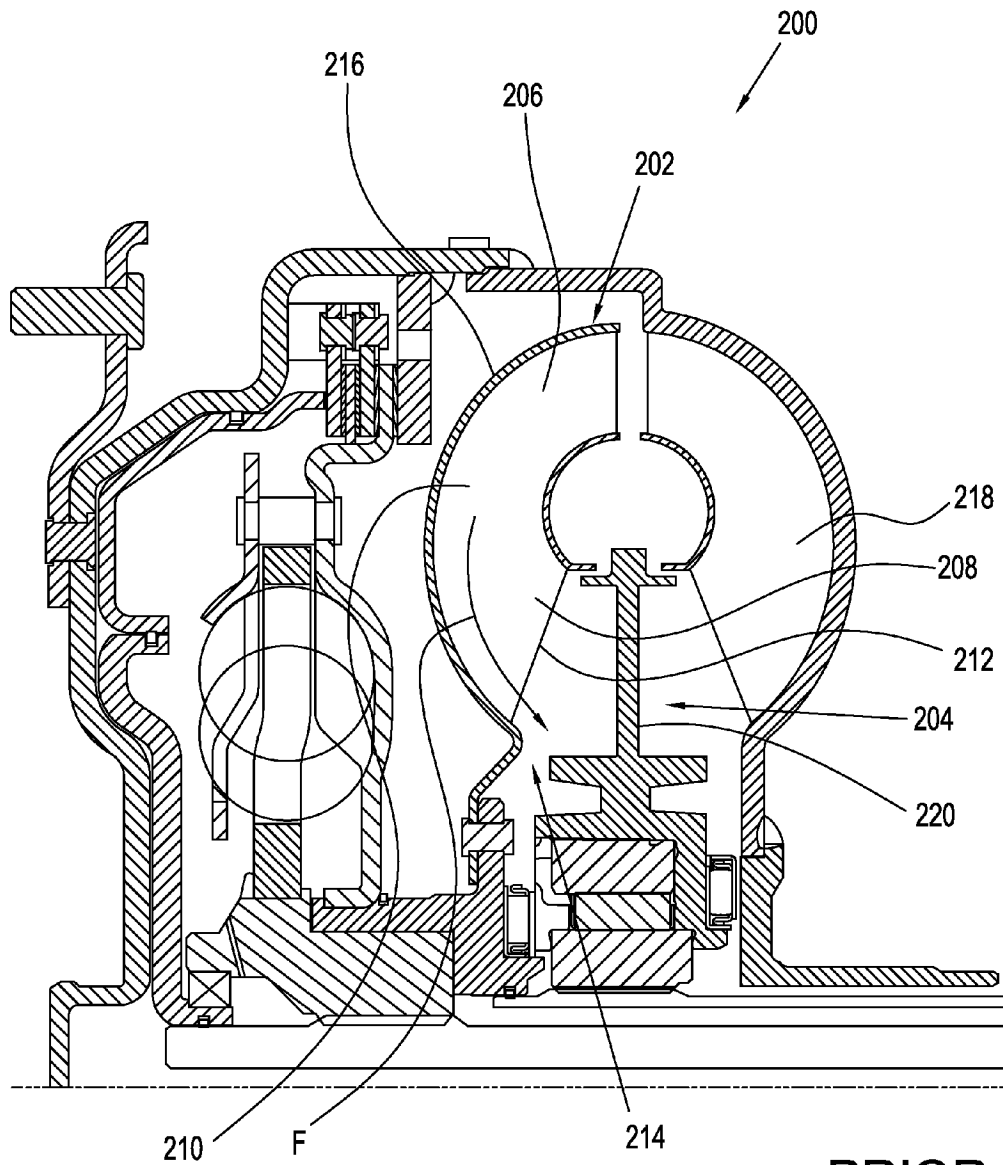


Fig. 6C



PRIOR  
ART

Fig. 7



1

**EXTENDED TURBINE BLADE**CROSS-REFERENCE TO RELATED  
APPLICATIONS

This application claims the benefit of U.S. Provisional Patent Application No. 61/579,879, filed Dec. 23, 2011.

## TECHNICAL FIELD

The present disclosure relates to a blade for a turbine in a torque converter, in particular, an extended blade arranged to direct flow from the turbine to a stator.

## BACKGROUND

FIG. 7 is a partial cross-section of prior art torque converter **200**. In torque converter **200**, the flow paths F of fluid from turbine **202** to stator **204** are influenced by the configuration of blades **206**, in particular portion **208** of the blades. Fluid flows along surface **210** of blade **206**, or follows a path paralleling the surface. When the fluid reaches portion **208** and edge **212**, the fluid continues in substantially the same direction, since portion **208** and edge **212** do not alter the curvature of blade **206** along which the fluid is flowing. Thus, flow paths F continue past edge **212** as shown in FIG. 1.

Torque converter **200** includes circumferential gap **214** between shell **216** of the turbine and the stator. Due to the angle of the flow paths upon leaving the turbine blade, fluid is directed radially inward, causing some of the fluid to enter gap **214**, and resulting in leakage of the fluid flow from the turbine to the stator and impeller **218**. That is, rather than flowing to the impeller, this fluid is lost in gap **214**, reducing torque and efficiency for the torque converter.

The amount of torque produced by fluid flowing from the turbine through the stator to the impeller is a function of where the fluid contacts blades **220** of the stator. Specifically, the further the fluid contacts the stator blades in a radially outward direction, the more torque is produced. Since flow lines F are directed generally radially inward, the fluid tends to contact the radially inner portions of blades **220**, reducing the torque possible with the fluid flow.

## SUMMARY

According to aspects illustrated herein, there is provided a torque converter, including: an impeller and a turbine with: a shell; and at least one blade including: a blade body with a first edge connected to the shell; and a portion extending from the blade body. The torque converter includes a stator including: a stator body, and at least one stator blade axially disposed between the impeller and the turbine and connected to the stator body. A circumferential space is formed between the turbine shell and the stator body. At least a portion of the circumferential space is radially aligned with the portion of the at least one blade.

According to aspects illustrated herein, there is provided a turbine for a torque converter, including: a shell; and a blade including: a blade body with an edge connected to the shell; a first segment extending from the blade body and including a first surface in contact with a second surface of the shell; and a second segment extending from the first segment, at least partially separated from the blade body by the first segment, and forming a distal end of the at least one blade free of contact with the turbine shell.

2

According to aspects illustrated herein, there is provided a turbine for a torque converter, including: a shell; and a blade including: a blade body with an edge connected to the shell; a first segment continuous with the blade body and with a first surface facing the first section of the shell or in contact with the first section of the shell; and a second segment extending from the first segment, at least partially separated from the blade body by the first segment, and forming a distal end of the at least one blade free of contact with the shell. An axial plane passing through the blade body and the first and second segments the second segment forms: a straight line; a smooth curve; or a U shape.

## BRIEF DESCRIPTION OF THE DRAWINGS

Various embodiments are disclosed, by way of example only, with reference to the accompanying schematic drawings in which corresponding reference symbols indicate corresponding parts, in which:

FIG. 1A is a perspective view of a cylindrical coordinate system demonstrating spatial terminology used in the present application;

FIG. 1B is a perspective view of an object in the cylindrical coordinate system of FIG. 1A demonstrating spatial terminology used in the present application;

FIG. 2 is a partial cross-sectional view of a torque converter with extended turbine blades;

FIG. 3 is a partial cross-sectional view of a torque converter with extended turbine blades having a U-shape;

FIG. 4 is a perspective view of a plurality of extended turbine blades;

FIG. 5 is a perspective view of a plurality of extended turbine blades with a U-shape;

FIGS. 6A through 6C shown flow paths for a prior art turbine blade and two extended turbine blades; and,

FIG. 7 is a partial cross-section of a prior art torque converter.

## DETAILED DESCRIPTION

At the outset, it should be appreciated that like drawing numbers on different drawing views identify identical, or functionally similar, structural elements of the disclosure. It is to be understood that the disclosure as claimed is not limited to the disclosed aspects.

Furthermore, it is understood that this disclosure is not limited to the particular methodology, materials and modifications described and as such may, of course, vary. It is also understood that the terminology used herein is for the purpose of describing particular aspects only, and is not intended to limit the scope of the present disclosure.

Unless defined otherwise, all technical and scientific terms used herein have the same meaning as commonly understood to one of ordinary skill in the art to which this disclosure belongs. It should be understood that any methods, devices or materials similar or equivalent to those described herein can be used in the practice or testing of the disclosure.

FIG. 1A is a perspective view of cylindrical coordinate system **80** demonstrating spatial terminology used in the present application. The present invention is at least partially described within the context of a cylindrical coordinate system. System **80** has a longitudinal axis **81**, used as the reference for the directional and spatial terms that follow. The adjectives “axial,” “radial,” and “circumferential” are with respect to an orientation parallel to axis **81**, radius **82** (which is orthogonal to axis **81**), and circumference **83**,

respectively. The adjectives “axial,” “radial” and “circumferential” also are regarding orientation parallel to respective planes. To clarify the disposition of the various planes, objects **84**, **85**, and **86** are used. Surface **87** of object **84** forms an axial plane. That is, axis **81** forms a line along the surface. Surface **88** of object **85** forms a radial plane. That is, radius **82** forms a line along the surface. Surface **89** of object **86** forms a circumferential plane. That is, circumference **83** forms a line along the surface. As a further example, axial movement or disposition is parallel to axis **81**, radial movement or disposition is parallel to radius **82**, and circumferential movement or disposition is parallel to circumference **83**. Rotation is with respect to axis **81**.

The adverbs “axially,” “radially,” and “circumferentially” are with respect to an orientation parallel to axis **81**, radius **82**, or circumference **83**, respectively. The adverbs “axially,” “radially,” and “circumferentially” also are regarding orientation parallel to respective planes.

FIG. 1B is a perspective view of object **90** in cylindrical coordinate system **80** of FIG. 1A demonstrating spatial terminology used in the present application. Cylindrical object **90** is representative of a cylindrical object in a cylindrical coordinate system and is not intended to limit the present invention in any manner. Object **90** includes axial surface **91**, radial surface **92**, and circumferential surface **93**. Surface **91** is part of an axial plane, surface **92** is part of a radial plane, and surface **93** is a circumferential surface.

FIG. 2 is a partial cross-sectional view of torque converter **100** with extended turbine blades **102**.

FIG. 3 is a partial cross-sectional view of torque converter **100** with extended turbine blades **102** having a U-shape.

FIG. 4 is a perspective view of a plurality of extended turbine blades **102**.

FIG. 5 is a perspective view of a plurality of extended turbine blades **102** with a U-shape. The following should be viewed in light of FIGS. 2 through 5. Torque converter **100** includes impeller **104** and turbine **106**. The turbine includes shell **108** and at least one blade **102**. Blade **102** includes blade body **110** with edge **112** connected to the shell, and portion **114** extending from the blade body. The torque converter includes stator **116** with stator body **118** and at least one stator blade **120**. Blade **120** is axially disposed between the impeller and the turbine and connected to the stator body. Circumferential space **122** is formed between the turbine shell and the stator body, and at least a portion of the circumferential space is radially aligned with portion **114** of blade **102**. In an example embodiment, for example, as shown in FIGS. 2 and 3, the circumferential space is wholly aligned with portion **114** in radial direction R1.

Portion **114** of blade **102** extends from the blade body at least partially in axial direction A1 toward the stator blade. In an example embodiment, portion **114** includes segments **124** and **126**. Segment **124** is continuous with the blade body and includes surface **128** in contact with the shell. Segment **126** extends from segment **124**, is at least partially separated from the blade body by segment **124**, and forms distal edge **130** of portion **114**. In an example embodiment, at least a portion of circumferential space **122** is radially aligned with segment **126**. In an example embodiment, all of space **122** is radially aligned with segment **126**.

In an example embodiment, segment **126** forms a straight line or a smooth curve in an axial plane passing through the blade body and segments **124** and **126**, for example, as shown in FIGS. 2 and 4. In an example embodiment, segment **126** forms a U shape that opens in a radially outward direction in an axial plane passing through the blade body and segments **124** and **126**, for example, as shown in

FIGS. 3 and 5. In an example embodiment, segment **126** includes circumferential surface **136**.

In an example embodiment, blade **102** is formed of a single piece of folded metal, that is, body **110** and segments **124** and **126** are formed of a single piece of folded metal. Surface **128** of segment **124** faces in direction D1, toward the shell. Segment **124** also includes surface **134** facing in direction D2, opposite direction D1. Segment **126** includes surfaces **136** and **138** joined at distal edge **130** and facing opposite directions D3 and D4, respectively. Surfaces **128** and **134** are continuous with surfaces **138** and **136**, respectively, and are disjoint with surfaces **138** and **136**, respectively, for example, at seam **140**. The blade body includes surfaces **142** and **144** surfaces facing opposite directions D5 and D6 and connected at edge **112**. Surfaces **136**, **134**, and **144** form a continuous disjoint surface, for example, disjoint at seams **140** and **146**.

In an example embodiment, the torque converter includes core ring **148**. Blade **102** includes edge **150** connected to the core ring and edge **152** connecting edges **112** and **150** and axially aligned with the stator. Edge **130** is free of contact with the blade body and segment **124** and at least a portion of edge **112** extends beyond edge **152** in an axial direction. For example, all of edge **112** extends beyond edge **152** in direction A1 in FIGS. 2 and 3. Edge **112** also can be described by the axial and radial positioning of the edge. As shown in FIG. 2, edge **112** is in a fixed axial position, for example, using cover **154** as a fixed axial point of reference. This distance will not vary unless the turbine shell axially displaces. Edge **112** also is at fixed radial distance **158** from axis of rotation **160** for the torque converter.

FIGS. 6A through 6C shown flow paths for a prior art turbine blade and two extended turbine blades. The following should be viewed in light of FIGS. 2 through 6C. The following provides further detail regarding torque converter **100**, turbine **106**, and blade **102**. As noted above, two problems with prior art torque converters are leakage to the gap between the turbine and the stator, and loss of torque due to fluid mostly contacting radially inward portions of the stator blades. As shown in FIG. 6A, the radially inward flow lines resulting from the configuration of prior art blade PB cause this radially inward flow.

Advantageously, blade **102** provides solutions for both these problems. For example, as shown in FIG. 6B, the configuration of blade **102** in FIGS. 2 and 4 results in segment **126** blocking flow to gap **122** shown in FIGS. 2 and 3. For example, as the fluid flows along surfaces **144** and **134** in FIG. 4, the fluid encounters surface **136**, which is essentially parallel to axis R for torque converter **100**. Since segment **126** is radially aligned with gap **122**, segment **126** prevents fluid from flowing radially inward toward the gap. Further, as a result of the axial alignment of segment **126**, the fluid is following in an axial direction toward the stator, rather than in a radially downward direction, further reducing the possibility of leakage flow. In addition, flow path F in FIG. 6B contacts the stator blades radially more outwardly than in FIG. 7, increasing the torque output of torque converter **100**.

The configuration of segment **126** in FIGS. 3 and 5 provides the same diversion of the fluid away from gap **122**, and as shown in FIG. 6C causes the fluid to flow radially outward toward the stator. Thus, flow path F in FIG. 6C contacts the stator blades radially more outwardly than in FIG. 6B, even further increasing the torque output of torque converter **100**.

It will be appreciated that various of the above-disclosed and other features and functions, or alternatives thereof, may

5

be desirably combined into many other different systems or applications. Various presently unforeseen or unanticipated alternatives, modifications, variations, or improvements therein may be subsequently made by those skilled in the art which are also intended to be encompassed by the following claims.

We claim:

1. A torque converter, comprising:  
 a core ring;  
 an axis of rotation;  
 an impeller; and,  
 a turbine with:  
 a shell; and,  
 at least one blade including:  
 a blade body with a first edge connected to the shell;  
 a second edge connected to the shell and to the core ring,  
 the second edge extending from the shell to the core ring; and,  
 a portion extending from the blade body at least partially in a direction parallel to the axis of rotation, wherein in an plane, defined as common to the axis of rotation, passing through the blade body and the portion, the portion forms a straight line, a smooth curve, or a U shape.
2. The torque converter of claim 1, wherein the portion of the at least one blade includes a circumferential surface.
3. The torque converter of claim 1, wherein the U shape opens in a radially outward direction.
4. The torque converter of claim 1, wherein:  
 the blade body and the portion are formed of a single piece of folded metal.
5. A turbine for a torque converter, comprising:  
 a core ring;  
 a shell; and,  
 a blade including:  
 a blade body with an edge connected to the shell and to the core ring, the edge extending from the shell to the core ring;  
 a first segment extending from the blade body and including a first surface in contact with a second surface of the shell; and,  
 a second segment:  
 extending from the first segment at least partially in a direction parallel to the axis of rotation;  
 forming a straight line in a plane, defined as common to the axis of rotation, passing through the blade body and the first and second segments; and,  
 at least partially separated from the blade body by the first segment, and forming a distal end of the at least one blade free of contact with the turbine shell.
6. The torque converter of claim 5, wherein:  
 the second segment includes a first section in contact with the first segment and a second section forming the distal end; and,

6

- the first and second sections of the second segment form a U shape opening in a radially outward direction.
7. The torque converter of claim 5, wherein:  
 the first surface faces in a first direction;  
 the first segment includes a second surface facing in a second direction, opposite the first direction;  
 the second segment includes third and fourth surfaces joined at the distal end and facing in third and fourth opposite directions, respectively, and continuous with the first and second surfaces;  
 the blade body includes fifth and sixth surfaces facing in fifth and sixth opposite directions and connected at the edge;  
 the second and fourth surfaces are joined by a first seam; and,  
 the fourth and sixth surfaces are joined by a second seam.
  8. A turbine for a torque converter, comprising:  
 a core ring;  
 a shell; and,  
 a blade including:  
 a blade body with an edge connected to the shell and to the core ring, the edge extending from the shell to the core ring;  
 a first segment continuous with the blade body and with a first surface facing the first section of the shell or in contact with the first section of the shell; and,  
 a second segment:  
 extending from the first segment;  
 at least partially separated from the blade body by the first segment;  
 connected to the first segment by a first seam; and,  
 forming a distal end of the at least one blade free of contact with the shell, wherein in an axial plane, defined as common to an axis of rotation, passing through the blade body and the first and second segments the second segment forms: a straight line; a smooth curve; or a U shape.
  9. The torque converter of claim 8, wherein:  
 the first surface faces in a first direction;  
 the first segment includes a second surface facing in a second direction, opposite the first direction;  
 the second segment includes third and fourth surfaces joined at the distal end and facing in third and fourth opposite directions, respectively, and continuous with the first and second surfaces, respectively;  
 the blade body includes fifth and sixth surfaces facing in fifth and sixth opposite directions and connected at the edge;  
 the second and fourth surfaces are joined by the first seam; and,  
 the fourth and sixth surfaces are joined by a second seam.
  10. The torque converter of claim 9, wherein the second, fourth, and sixth surfaces are each respective smoothly curved surfaces.

\* \* \* \* \*