



US009821253B2

(12) **United States Patent**  
**Moreira-Espinoza et al.**

(10) **Patent No.:** **US 9,821,253 B2**

(45) **Date of Patent:** **Nov. 21, 2017**

(54) **AXIALLY COMPACT FUEL FILTER**

(56) **References Cited**

(71) Applicant: **Motor Components, LLC**, Elmira Heights, NY (US)

U.S. PATENT DOCUMENTS

(72) Inventors: **Edison X. Moreira-Espinoza**, Horseheads, NY (US); **Kenneth F. Seager, Sr.**, Big Flats, NY (US)

3,382,984 A	5/1968	Kuss
3,685,972 A	8/1972	De Palma et al.
3,782,083 A	1/1974	Rosenberg
3,841,489 A	10/1974	Combest et al.
3,890,232 A	6/1975	Combest et al.
4,036,758 A	7/1977	Combest
4,592,839 A	6/1986	Rosenberg
5,972,213 A	10/1999	Golan
6,210,572 B1	4/2001	Tulchinskiy

(73) Assignee: **Motor Components, LLC**, Elmira Heights, NY (US)

(Continued)

(\* ) Notice: Subject to any disclaimer, the term of this patent is extended or adjusted under 35 U.S.C. 154(b) by 354 days.

FOREIGN PATENT DOCUMENTS

(21) Appl. No.: **14/083,638**

DE	1930082	12/1970
DE	3534240	3/1987

(22) Filed: **Nov. 19, 2013**

(Continued)

(65) **Prior Publication Data**

US 2015/0136684 A1 May 21, 2015

*Primary Examiner* — Lucas Stelling

(74) *Attorney, Agent, or Firm* — Simpson & Simpson, PLLC

(51) **Int. Cl.**

<b>B01D 27/08</b>	(2006.01)
<b>B01D 29/15</b>	(2006.01)
<b>B01D 35/00</b>	(2006.01)
<b>B01D 35/30</b>	(2006.01)
<b>F02M 37/22</b>	(2006.01)

(57) **ABSTRACT**

A fuel filter, including: a housing, an inlet port, and an outlet port. The housing includes: a first axially disposed side wall forming a radially outermost portion of a circumference for the housing; a second axially disposed side wall located radially inward of the first axially disposed wall; a first radially disposed end wall connected to a first axial edge of the first axially disposed wall; and a second radially disposed end wall connected to a first axial edge of the second axially disposed side wall. The outlet port extends from the second radially disposed end wall and is radially aligned with the second axially disposed side wall. The inlet port extends from the first radially disposed end wall.

(52) **U.S. Cl.**

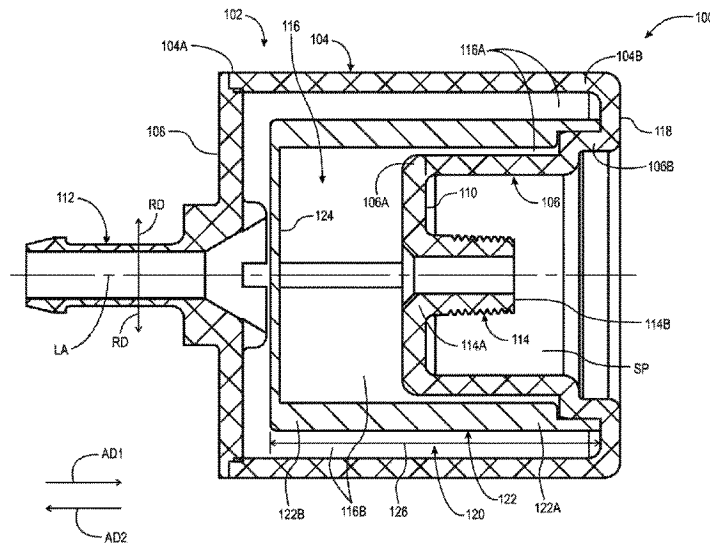
CPC ..... **B01D 29/15** (2013.01); **B01D 27/08** (2013.01); **B01D 35/005** (2013.01); **B01D 35/30** (2013.01); **B01D 2201/302** (2013.01); **F02M 37/22** (2013.01)

(58) **Field of Classification Search**

CPC ..... B01D 29/15; B01D 35/005; B01D 35/30; B01D 35/306; B01D 2201/302; B01D 27/08; F01M 11/03; F02M 37/22; F02M 37/221; F02M 37/223

See application file for complete search history.

**9 Claims, 5 Drawing Sheets**



(56)

**References Cited**

U.S. PATENT DOCUMENTS

6,595,371	B1*	7/2003	Desmarais .....	B01D 27/08 210/438
8,029,592	B2	10/2011	Schramm et al.	
2001/0006161	A1	7/2001	Tulchinskiy	
2005/0072302	A1	4/2005	Miller et al.	
2005/0150569	A1*	7/2005	Garvin .....	B01D 37/025 141/100
2006/0201870	A1*	9/2006	Seto .....	B01D 29/15 210/435
2006/0273003	A1	12/2006	Sudo et al.	
2008/0149560	A1	6/2008	Koguchi et al.	
2009/0145826	A1*	6/2009	Calcaterra .....	B01D 27/08 210/137

FOREIGN PATENT DOCUMENTS

DE	102009046094	5/2011
EP	1070529	1/2001

\* cited by examiner

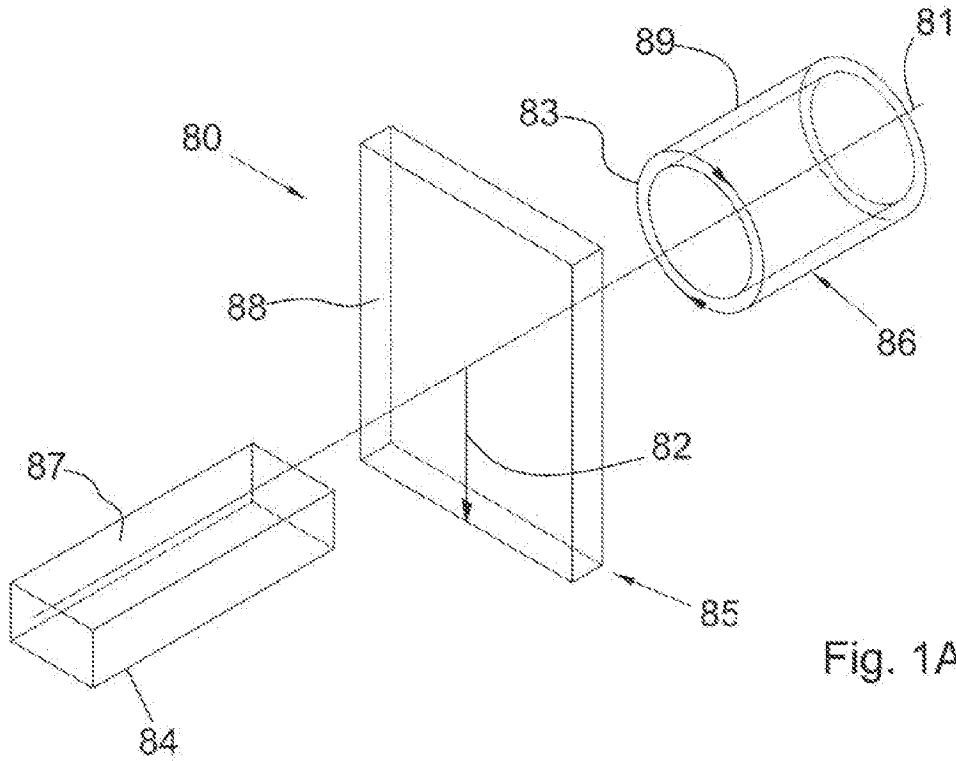


Fig. 1A

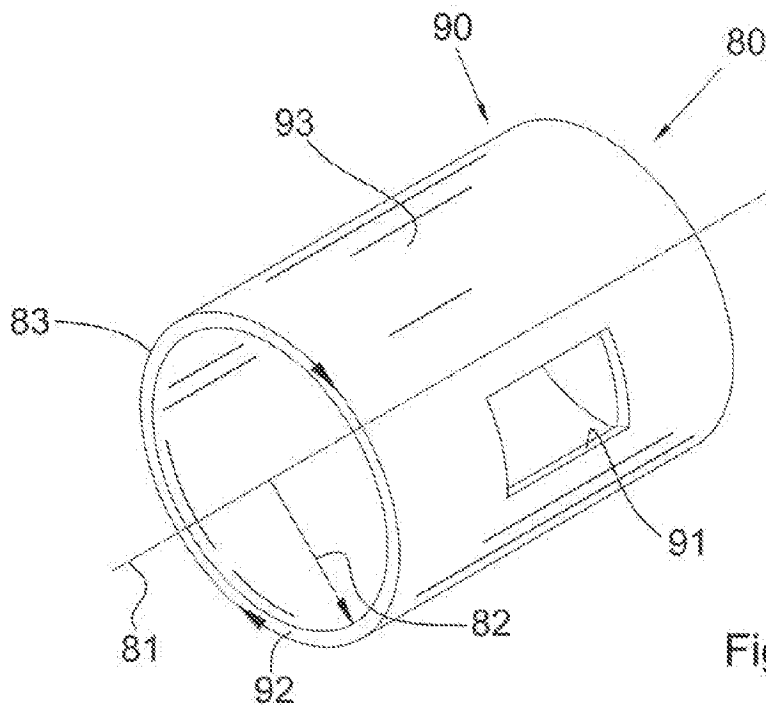


Fig. 1B

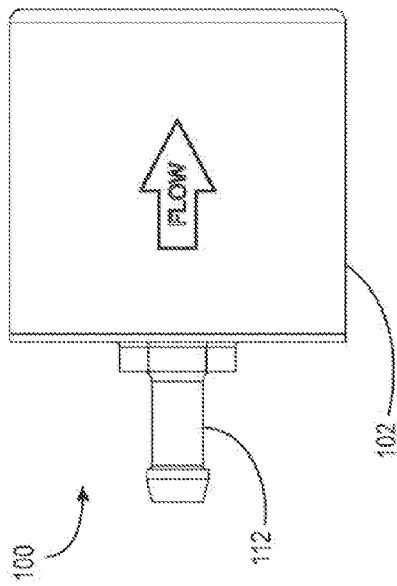


Fig. 2

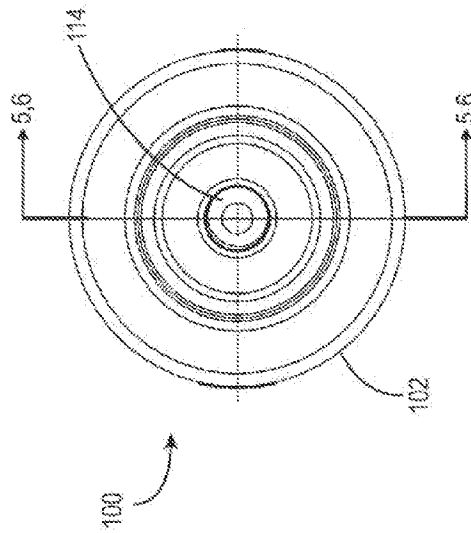


Fig. 4

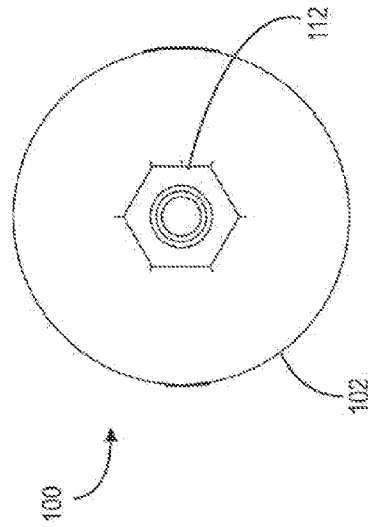


Fig. 3

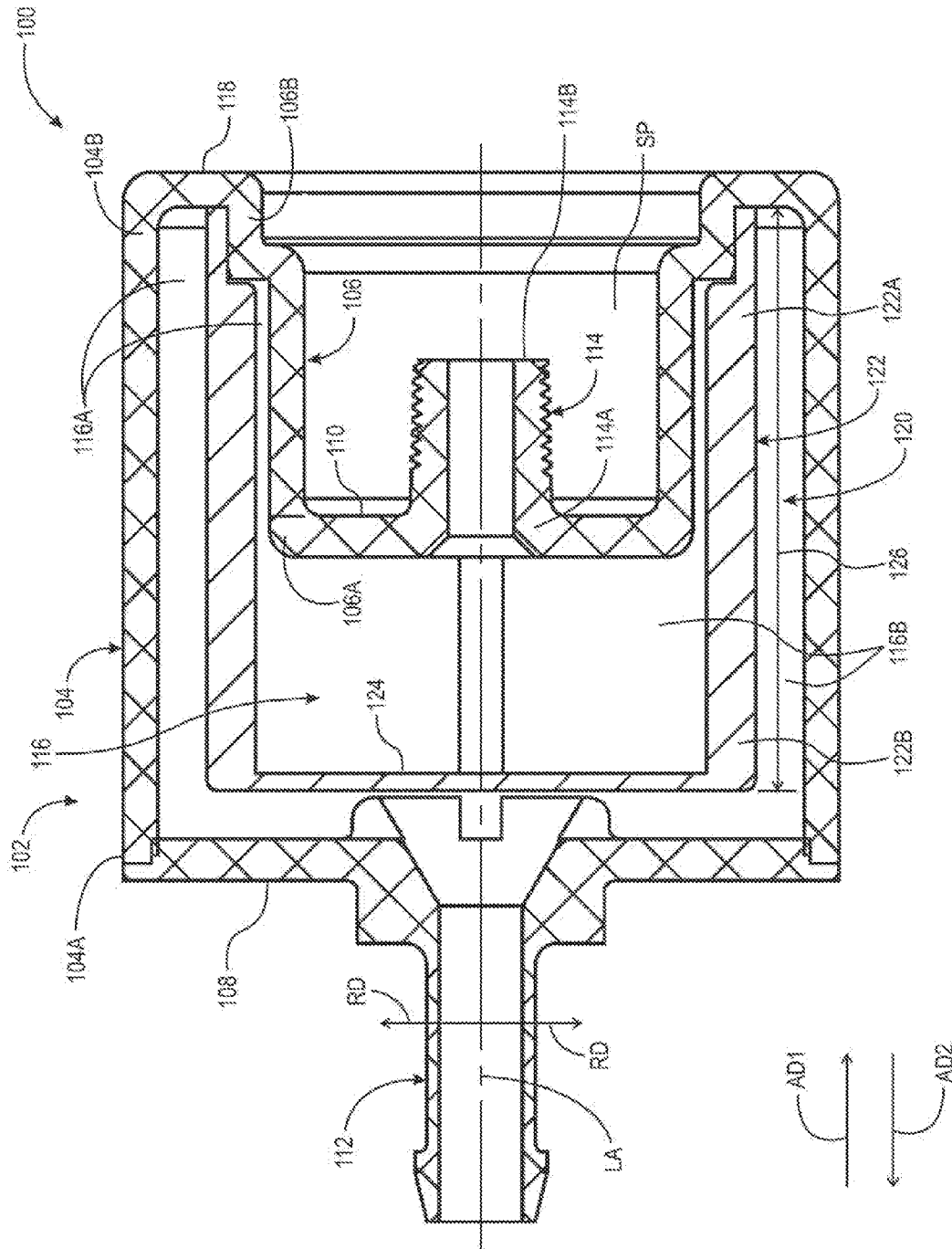
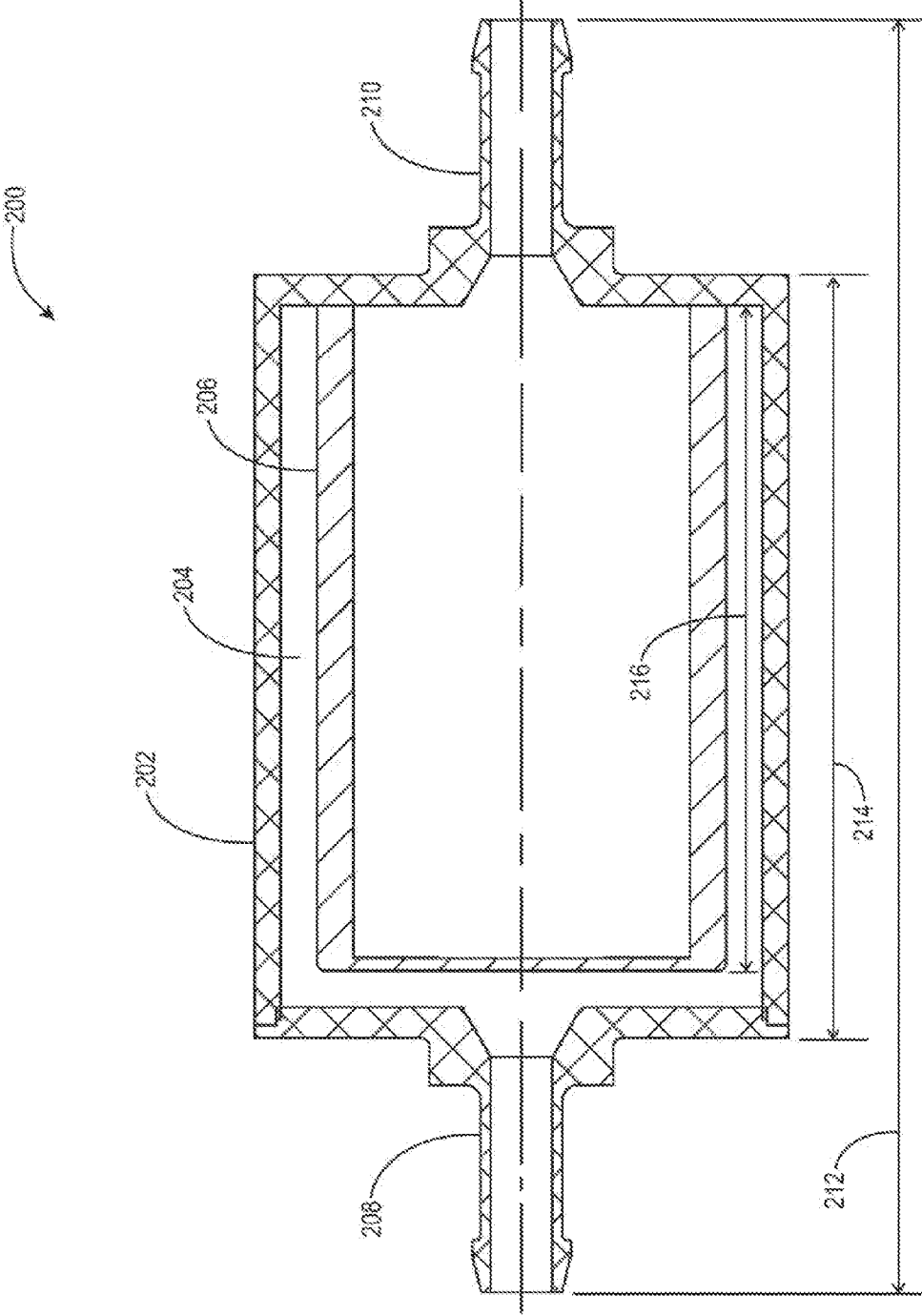


Fig. 5





PRIOR ART

Fig. 7

1

## AXIALLY COMPACT FUEL FILTER

## TECHNICAL FIELD

The present disclosure relates to an axially compact fuel filter, in particular a fuel filter with a recess outlet port.

## BACKGROUND

FIG. 7 is a schematic cross-sectional view of typical prior art fuel filter **200**. Filter **200** includes housing **202**, cavity **204** formed by the housing, filter element **206** located in the cavity, inlet port **208**, and outlet port **210**. Fuel filters are used in a wide variety of combustion engine applications. In general, it is desirable to minimize axial length **212** of filter **200** while attaining a desired filtering capacity or function. The filtering capacity or function is dependent upon length **216** of element **206**, which in turn is dependent upon axial length **214**, which along with the respective positions of the input and output ports determines overall axial length **212**.

## SUMMARY

According to aspects illustrated herein, there is provided a fuel filter, including: a housing, an inlet port, and an outlet port. The housing includes: a first axially disposed side wall forming a radially outermost portion of a circumference for the housing; a second axially disposed side wall located radially inward of the first axially disposed wall; a first radially disposed end wall connected to a first axial edge of the first axially disposed wall; and a second radially disposed end wall connected to a first axial edge of the second axially disposed side wall. The outlet port extends from the second radially disposed end wall and is radially aligned with the second axially disposed side wall. The inlet port extends from the first radially disposed end wall.

According to aspects illustrated herein, there is provided a fuel filter, including: a housing including a first axially disposed side wall forming a radially outermost portion of a circumference for the housing and a second axially disposed side wall located radially inward of the first axially disposed wall; a cavity enclosed by the housing and including a first portion enclosed, in a radial direction, by only the first axially disposed side wall and a second portion radially disposed between the first and second axially disposed side walls; an inlet port open to the cavity; and an outlet port open to the first portion of the cavity and including a distal end radially aligned with the second portion of the cavity.

According to aspects illustrated herein, there is provided a fuel filter, including: a housing including a first and second axially disposed side walls, a first radially disposed end wall directly connected to a first axial end of the first axially disposed side wall, a second radially disposed end wall directly connected to a first axial end of the second axially disposed side wall, and a third radially disposed end wall directly connected to respective second axial ends of the first and second axially disposed side walls; a cavity including a first portion at least partially bounded by the first and third radially disposed end walls and the first axially disposed side wall and a second portion open to the first portion and at least partially bounded by the first and second axially disposed side walls and the third radially disposed end wall; an outlet port open to the first portion of the cavity, and including a first end direction connected to the third radially disposed wall and a distal end radially aligned with the second portion of the cavity and with the first and second axially disposed side walls and separated from the second

2

axially disposed wall, in a radial direction, by a space; an inlet port open to the first portion of the cavity and directly connected to the first radially disposed end wall; and a filter element including an axially extending portion including a first axial end sealed against the second axially disposed wall or the third radially disposed end wall and a radially extending portion directly connected to a second axial end of the axially extending portion and wholly disposed in the first portion of the cavity.

## BRIEF DESCRIPTION OF THE DRAWINGS

Various embodiments are disclosed, by way of example only, with reference to the accompanying schematic drawings in which corresponding reference symbols indicate corresponding parts, in which:

FIG. 1A is a perspective view of a cylindrical coordinate system demonstrating spatial terminology used in the present application;

FIG. 1B is a perspective view of an object in the cylindrical coordinate system of FIG. 1A demonstrating spatial terminology used in the present application; and,

FIG. 2 is a side view of a fuel filter;

FIG. 3 is an inlet end view of the fuel filter of FIG. 2;

FIG. 4 is an outlet end view of the fuel filter of FIG. 2;

FIG. 5 is a cross-sectional view generally along line **5,6-5,6** in FIG. 4;

FIG. 6 is a cross-sectional view generally along line **5,6-5,6** in FIG. 4; and,

FIG. 7 is a schematic representation of a typical prior art fuel filter.

## DETAILED DESCRIPTION

At the outset, it should be appreciated that like drawing numbers on different drawing views identify identical, or functionally similar, structural elements of the disclosure. It is to be understood that the disclosure as claimed is not limited to the disclosed aspects.

Furthermore, it is understood that this disclosure is not limited to the particular methodology, materials and modifications described and as such may, of course, vary. It is also understood that the terminology used herein is for the purpose of describing particular aspects only, and is not intended to limit the scope of the present disclosure.

Unless defined otherwise, all technical and scientific terms used herein have the same meaning as commonly understood to one of ordinary skill in the art to which this disclosure belongs. It should be understood that any methods, devices or materials similar or equivalent to those described herein can be used in the practice or testing of the disclosure.

FIG. 1A is a perspective view of cylindrical coordinate system **80** demonstrating spatial terminology used in the present application. The present invention is at least partially described within the context of a cylindrical coordinate system. System **80** has a longitudinal axis **81**, used as the reference for the directional and spatial terms that follow. The adjectives "axial," "radial," and "circumferential" are with respect to an orientation parallel to axis **81**, radius **82** (which is orthogonal to axis **81**), and circumference **83**, respectively. The adjectives "axial," "radial" and "circumferential" also are regarding orientation parallel to respective planes. To clarify the disposition of the various planes, objects **84**, **85**, and **86** are used. Surface **87** of object **84** forms an axial plane. That is, axis **81** forms a line along the surface. Surface **88** of object **85** forms a radial plane. That



is, radius **82** forms a line along the surface. Surface **89** of object **86** forms a circumferential plane. That is, circumference **83** forms a line along the surface. As a further example, axial movement or disposition is parallel to axis **81**, radial movement or disposition is parallel to radius **82**, and circumferential movement or disposition is parallel to circumference **83**. Rotation is with respect to axis **81**.

The adverbs “axially,” “radially,” and “circumferentially” are with respect to an orientation parallel to axis **81**, radius **82**, or circumference **83**, respectively. The adverbs “axially,” “radially,” and “circumferentially” also are regarding orientation parallel to respective planes.

FIG. 1B is a perspective view of object **90** in cylindrical coordinate system **80** of FIG. 1A demonstrating spatial terminology used in the present application. Cylindrical object **90** is representative of a cylindrical object in a cylindrical coordinate system and is not intended to limit the present invention in any manner. Object **90** includes axial surface **91**, radial surface **92**, and circumferential surface **93**. Surface **91** is part of an axial plane, surface **92** is part of a radial plane, and surface **93** is a circumferential surface.

FIG. 2 is a side view of fuel filter **100**.

FIG. 3 is an inlet end view of fuel filter **100** of FIG. 2.

FIG. 4 is an outlet end view of fuel filter **100** of FIG. 2.

FIG. 5 is a cross-sectional view generally along line **5,6-5,6** in FIG. 4. The following should be viewed in light of FIGS. 2 through 5. Fuel filter **100** includes longitudinal axis **LA** and housing **102** including axially disposed side walls **104** and **106** and radially disposed end walls **108** and **110**. Side wall **104** forms a radially outermost portion of a circumference for the housing. Side wall **106** is located radially inward of side wall **104**. End wall **108** is connected to axial end **104A** of side wall **104**. End wall **110** is connected to axial end **106A** of side wall **106**. Filter **100** includes inlet port **112** and outlet port **114**. Inlet port **112** extends from end wall **108**. Outlet port **114** extends from end wall **110** and is radially aligned with side wall **106**. Note that radial and axial references are with respect to axis **LA**. As shown in FIG. 5, inlet port **112** and outlet port **114** overlap in axial directions **AD1** and **AD2**, for example, axis **LA** passes through inlet port **112** and outlet port **114**.

In an example embodiment, the outlet port includes axial end **114A** directly connected the end wall **110** and distal end **114B** radially aligned with side walls **104** and **106**. In an example embodiment, an entirety of the outlet port is radially aligned with side walls **104** and **106** and is separated, in radial direction **RD**, from side wall **106** by space **SP** external to housing **102**.

In an example embodiment, axial direction **AD1** is from inlet port **112** toward outlet port **114** and outlet port **114** includes axial end **114A** directly connected to end wall **110**, and distal end **114B**. Each of side walls **104** and **106** extend past distal end **114B** in axial direction **AD1**.

Fuel filter **100** includes cavity **116** enclosed by housing **102**. In an example embodiment axial direction **AD1** is from inlet port **112** toward outlet port **114** and outlet port **114** includes axial end **114A** directly connected to end wall **110**, and distal end **114B**. Portion **116A** of cavity **116** extends past distal end **114B** in axial direction **AD1**.

In an example embodiment, the housing includes radially disposed end wall **118** connecting axial end **104B**, opposite axial end **104A**, of side wall **104** to axial end **106B**, opposite the axial end **106A**, of side wall **106**. For axial direction **AD1** from the inlet port toward the outlet port, end wall **118** is located past distal end **114B** in axial direction **AD1**.

In an example embodiment, portion **116A** of the cavity is radially disposed between side walls **104** and **106**. Portion

**116B** of the cavity is radially disposed between side wall **104** and is free of alignment, in radial direction **RD**, with side wall **106**.

In an example embodiment, fuel filter **100** includes filter element **120**, located within cavity **116**, and including axially disposed wall **122** and radially disposed wall **124** connected to axially disposed wall **122**. Wall **124** is located only in portion **116B**. At least a portion of wall **122** is radially aligned with the outlet port. In an example embodiment, portion **122A** of wall **122** is radially disposed between side walls **104** and **106** and portion **122B** of axially disposed wall **122** is radially aligned with side wall **104** and free of alignment, in radial direction **RD**, with side wall **106**.

FIG. 6 is a cross-sectional view generally along line **5,6-5,6** in FIG. 4. The following should be viewed in light of FIGS. 2 through 6. FIG. 6 is used to illustrate aspects of cavity **116**. In an example embodiment, portion **116B** of cavity **116** is at least partially bounded by end wall **108** in axial direction **AD2**, opposite direction **AD1**, and end wall **110** in direction **AD1**. By bounded by, it is meant that the cavity is located within the walls. In an example embodiment, portion **122A** divides portion **116A** of cavity **116** into portions **116C** and **116D** and portion **122B** divides portion **116B** of cavity **116** into portions **116E** and **116F**. In an example embodiment, portion **116C** opens to portion **116E** and portion **116D** opens to portion **116F**.

In an example embodiment, portion **116G** of cavity **116** is axially located between end wall **108** and wall **124** of filter element **120**, and is part of portion **116B**. In an example embodiment, end **122C** of filter wall **122** is sealed against wall **106** and/or wall **118** to ensure that fluid entering cavity **116** from inlet port **112** passes through and not around filter **120**. In an example embodiment, wall **106** includes stepped portion **106C** and end **122C** is sealed against stepped portion **122C** and/or end wall **118**. Typical fluid flow paths **FP** are shown in FIG. 6.

In an example embodiment, end wall **108** is formed as a separate end cap including inlet port **112**, and walls **104**, **106**, and **110** are part of an integral unit including outlet port **114**.

The capacity or function of fuel filter **100** is at least partly dependent upon how much filter material is available for filter **120**, which is at least partly dependent upon length **126** of element **120**, which in turn is dependent upon axial length **128** of housing **102**. As discussed above, it is desirable to attain a specified filter capacity or function while minimizing overall axial length **130** of filter **100**. Advantageously, by recessing outlet port **114** into space **SP**, filter **100** maximizes lengths **126** and length **128**, while minimizing overall length **130** of filter **100**. Specifically, outlet port **114** does not contribute to length **130**. For example, lengths **126** and **128** can be made equal to lengths **216** and **214** noted above, with overall length **130** being advantageously less than length **212**. Thus, the same or greater fuel filter capacity is enabled for filter **100** while minimizing overall axial length **130** of filter **100**.

It will be appreciated that various of the above-disclosed and other features and functions, or alternatives thereof, may be desirably combined into many other different systems or applications. Various presently unforeseen or unanticipated alternatives, modifications, variations, or improvements therein may be subsequently made by those skilled in the art which are also intended to be encompassed by the following claims.

5

What we claim is:

1. A fuel filter, comprising:
  - a housing including:
    - a first axially disposed side wall forming a radially outermost portion of a circumference for the housing; and,
    - a second axially disposed side wall located radially inward of the first axially disposed wall;
  - a cavity enclosed by the housing and including:
    - a first portion enclosed, in a radial direction, by only the first axially disposed side wall; and,
    - a second portion radially disposed between the first and second axially disposed side walls;
  - an inlet port radially centered on the housing and open to the cavity;
  - an outlet port radially centered on the housing and including:
    - an axial end that opens directly into the first portion of the cavity; and,
    - a distal end axially aligned with the second portion of the cavity; and,
  - a filter element located in the cavity and radially disposed between said first and second axially disposed side walls;
- wherein the filter element is disposed fluidly between the inlet port and the outlet port so that fluid that passed from the inlet port to the outlet port in the housing must be filtered by the filter element.
2. The fuel filter of claim 1, wherein:
  - the housing includes:
    - a first radially disposed end wall directly connected to:
      - an axial edge of the first axially disposed side wall; and,
      - the inlet port; and,
    - a second radially disposed end wall directly connected to:
      - an axial edge of the second axially disposed side wall; and,
      - the outlet port; and,
  - the first portion of the cavity is at least partially bounded by:
    - the first radially disposed end wall in a first axial direction; and,
    - the second radially disposed end wall in a second axial direction, opposite the first axial direction.

6

3. The fuel filter of claim 1, wherein:
  - the housing includes a radially disposed end wall directly connected to respective axial edges of the first and second axially disposed side walls; and,
  - the second portion of the cavity is open to the first portion of the cavity and is at least partially bounded by the radially disposed end wall.
4. The fuel filter of claim 1, wherein the filter element comprises:
  - an axially disposed wall located in the first and second portions of the cavity; and,
  - a radially disposed wall directly connected to the axially disposed wall and located only in the first portion of the cavity.
5. The fuel filter of claim 4, wherein:
  - a first portion of the axially disposed wall for the filter element divides the second portion of the cavity into third and fourth portions; and,
  - a second portion of the axially disposed wall for the filter element divides a part of the first portion of the cavity into fifth and sixth portions.
6. The fuel filter of claim 5, wherein:
  - the third portion is open to the fifth portion; and,
  - the fourth portion is open to the sixth portion.
7. The fuel filter of claim 5, wherein:
  - the housing includes a radially disposed end wall directly connected to the first axially disposed side wall and the inlet port;
  - the radially disposed wall of the filter element encloses the fifth portion in a second axial direction, opposite the first axial direction; and,
  - a seventh portion of the cavity is axially located between the radially disposed end wall and the radially disposed wall of the filter element.
8. The fuel filter of claim 6, wherein:
  - the outlet port includes a first end and a distal end, the distal end is axially opposite the first end; and,
  - the distal end is aligned, in a radial direction, with the third and fourth portions of the cavity.
9. The fuel filter of claim 7, wherein the inlet port is open to the first portion of the cavity and extends from a first radially disposed end wall in the first axial direction.

\* \* \* \* \*