

[54] **SURFACE EFFECT SHIP**  
[75] Inventor: **John B. Chaplin**, Covington, La.  
[73] Assignee: **Textron Inc.**, Providence, R.I.  
[\*\*] Term: **14 Years**  
[21] Appl. No.: **446,325**  
[22] Filed: **Dec. 2, 1982**  
[52] U.S. Cl. .... **D12/5**  
[58] Field of Search ..... **D12/5, 300, 301, 315,**  
**D12/318, 312; 114/67 A; 180/116, 121, 127**

[56] **References Cited**  
**U.S. PATENT DOCUMENTS**  
D. 218,787 9/1970 Nicholas ..... **D12/5**  
D. 227,509 6/1973 Walker ..... **D12/310**  
D. 235,320 6/1975 Klingler ..... **D12/312**

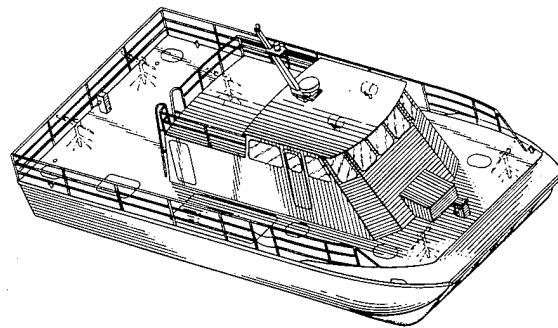
*Primary Examiner*—James M. Gandy  
*Assistant Examiner*—Kay H. Chin  
*Attorney, Agent, or Firm*—Bean, Kauffman & Bean

[57] **CLAIM**

The ornamental design for a surface effect ship, as shown and described.

**DESCRIPTION**

FIG. 1 is a top perspective view of a surface effect ship, showing my new design;  
FIG. 2 is a front end elevational view thereof;  
FIG. 3 is a rear end elevational view thereof;  
FIG. 4 is a top plan view thereof; and  
FIG. 5 is a side elevational view thereof, the opposite side being a mirror image of that shown.  
The broken lines in the drawing are for illustrative purposes only.



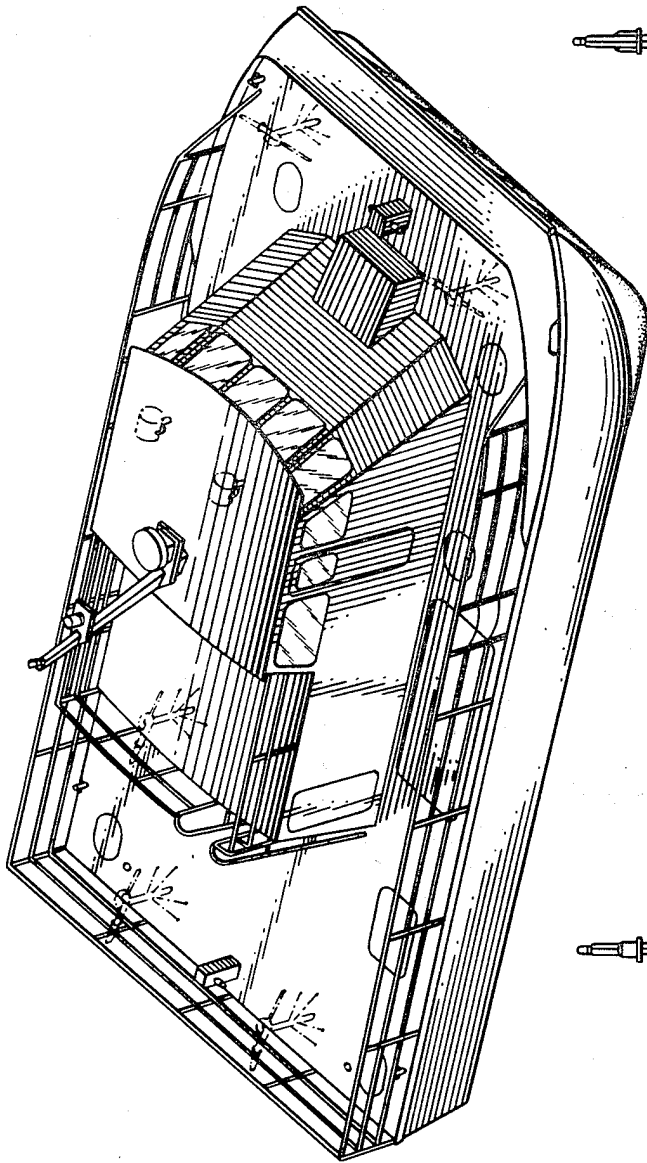


Fig. 1.

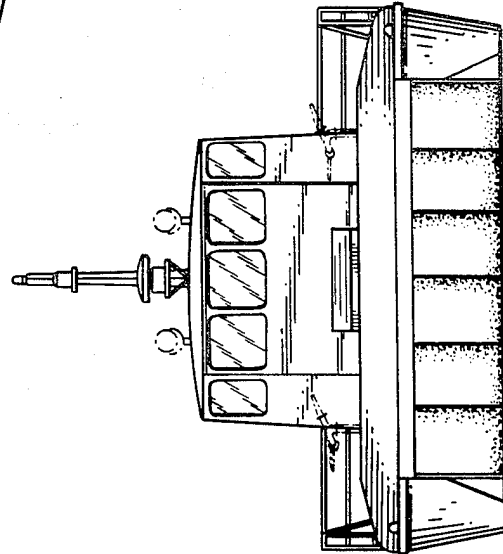


Fig. 2.

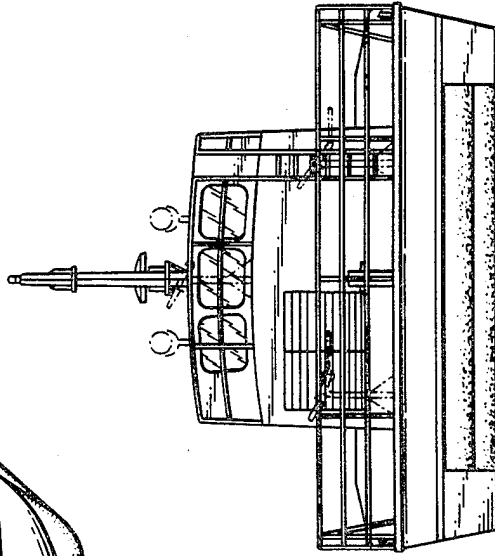


Fig. 3.

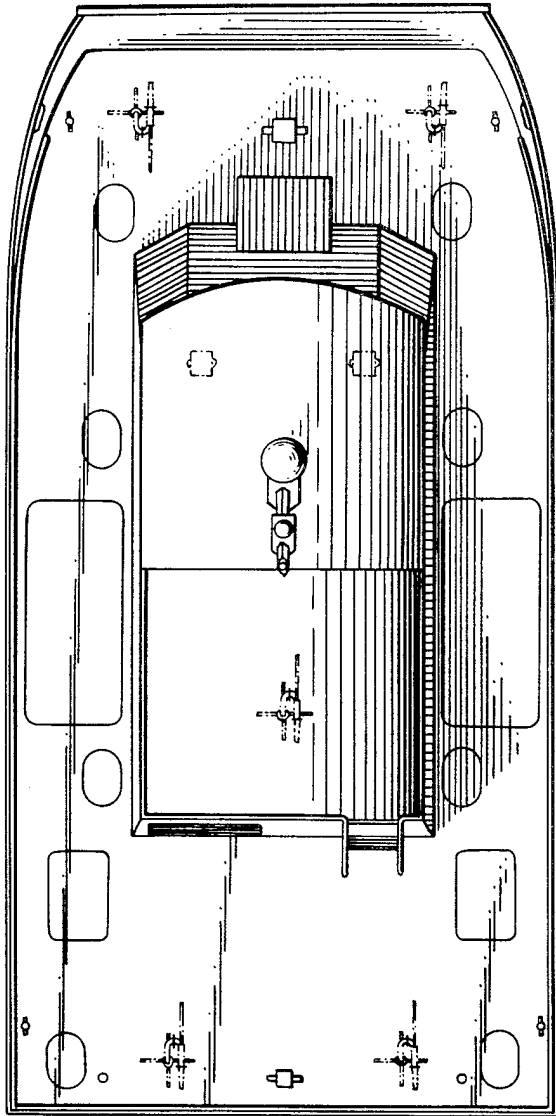


Fig. 4.

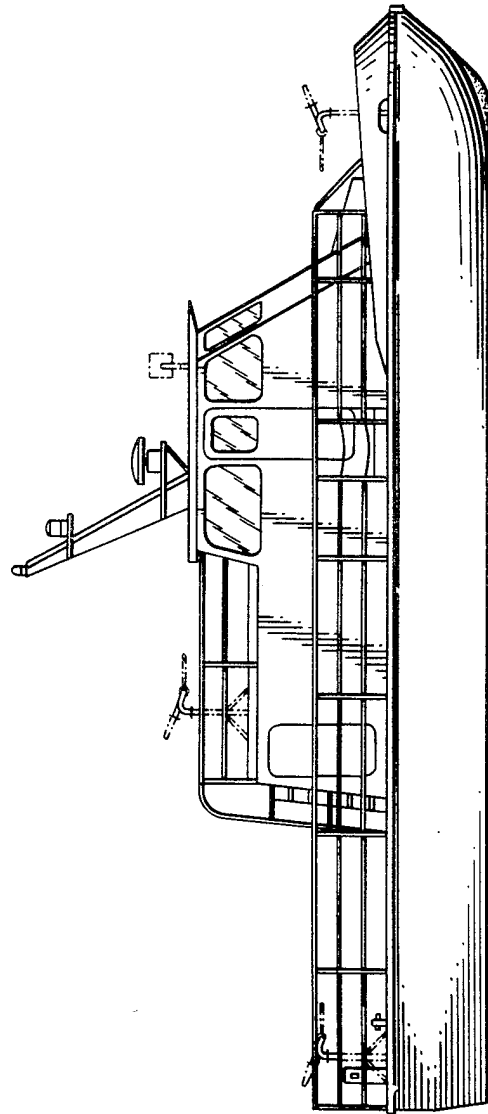


Fig. 5.