



US00D352527S

United States Patent [19]**Brydalski et al.**[11] **Patent Number: Des. 352,527**[45] **Date of Patent: ** Nov. 15, 1994**[54] **DETACHABLE BASE PLATE FOR A
TRAFFIC SIGN**[75] **Inventors:** **Paul A. Brydalski**, West Seneca;
George A. Giotis, Williamsville, both
of N.Y.[73] **Assignee:** **Flasher Handling Corp.**, Depew,
N.Y.[**] **Term:** **14 Years**[21] **Appl. No.:** **19,341**[22] **Filed:** **Feb. 28, 1994****Related U.S. Application Data**[60] Division of Ser. No. 948,829, Sep. 17, 1992, Pat. No.
Des. 346,623, which is a continuation-in-part of Ser.
No. 611,869, Nov. 13, 1990, Pat. No. Des. 331,605.[52] **U.S. Cl.** **D20/41**[58] **Field of Search** 40/584, 606, 607, 608,
40/610, 611, 612; D8/373, 380; D20/17, 10, 39,
40, 41, 99; D10/104, 109[56] **References Cited****U.S. PATENT DOCUMENTS**

D. 215,896	11/1969	Moore	D72/1
D. 237,756	11/1975	Williamson	D20/3
D. 257,238	10/1980	Zandsman	D10/109
D. 279,460	7/1985	Souya	D10/109
3,218,746	11/1965	Hawkins, Jr.	40/145
3,235,214	2/1966	Sprung	248/158
3,858,997	1/1975	Boone	404/10
3,863,880	2/1975	Lindner et al.	248/349

Primary Examiner—Wallace R. Burke*Assistant Examiner*—Marcus Jackson*Attorney, Agent, or Firm*—Bean, Kauffman & Spencer[57] **CLAIM**

The ornamental design for a detachable base plate for a traffic sign, as shown and described.

DESCRIPTION

FIG. 1 is a top plan view of a detachable base plate for a traffic sign showing our new design;

FIG. 2 is a bottom plan view thereof;

FIG. 3 is an end elevational view thereof;

FIG. 4 is an opposite end elevational view thereof; and,

FIG. 5 is a side elevational view thereof, with the opposite side being identical to that shown.

The broken line showing in FIG. 1 depicts a known rubber traffic sign base and forms no part of the present design.

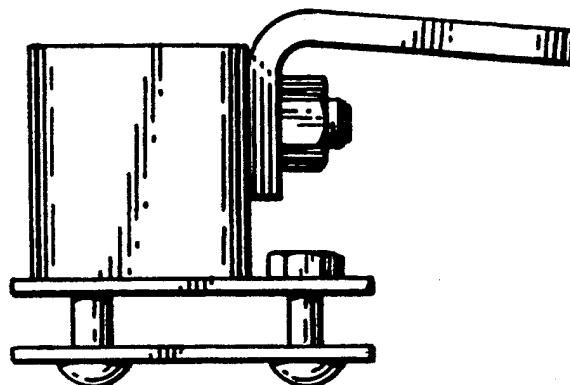
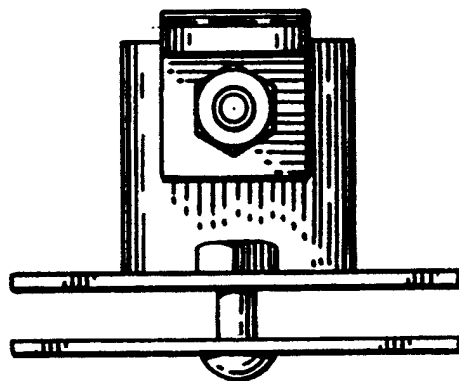


Fig. 1.

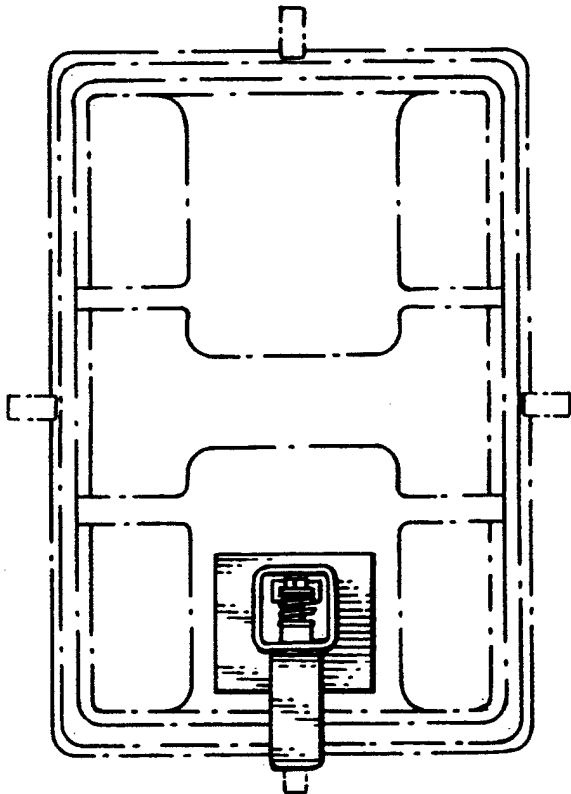


Fig. 2.

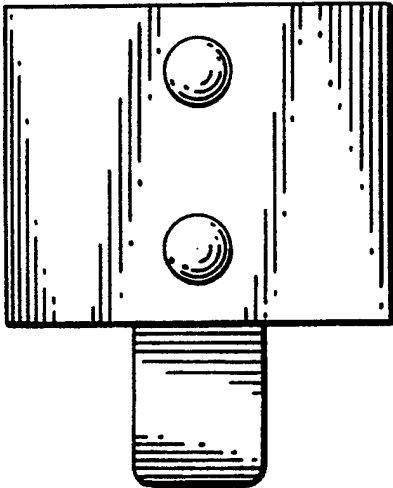


Fig. 4.

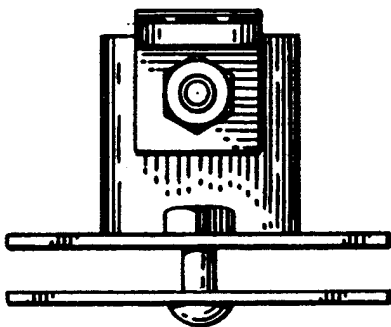


Fig. 3.

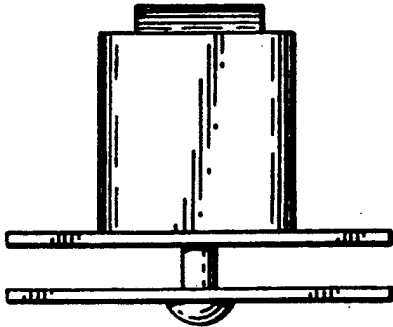


Fig. 5.

