



US00D372181S

United States Patent [19]

Kelley

[11] **Patent Number: Des. 372,181**

[45] **Date of Patent: **Jul. 30, 1996**

[54] **KNIFE SHARPENER**

[75] **Inventor: Andrew T. Kelley, Buffalo, N.Y.**

[73] **Assignee: Cutco Cutlery Corporation, Olean, N.Y.**

[**] **Term: 14 Years**

[21] **Appl. No.: 25,707**

[22] **Filed: Jul. 1, 1994**

[52] **U.S. Cl. D8/93**

[58] **Field of Search D8/63, 90, 91, D8/92, 93; 76/82, 86, 88; 451/262, 267, 293, 540, 548, 549, 552, 555, 557, 558**

[56] **References Cited**

U.S. PATENT DOCUMENTS

D. 145,803	10/1946	Jones	D37/1
D. 173,204	10/1954	Hussar	D37/1
D. 183,530	9/1958	Lamb	D37/1
D. 276,886	12/1984	Carter	D8/93
D. 299,308	1/1989	Prindle	D8/93
D. 309,415	7/1990	Shimizu	D8/93

D. 315,663	3/1991	Dolbosco	D8/93
D. 323,450	1/1992	Shimizu	D8/93
D. 331,688	12/1992	Busse	D8/63
D. 341,534	11/1993	Janikowski	D8/93
4,502,254	3/1985	Carter	451/555

Primary Examiner—Philip S. Hyder
Attorney, Agent, or Firm—Bean, Kauffman & Spencer

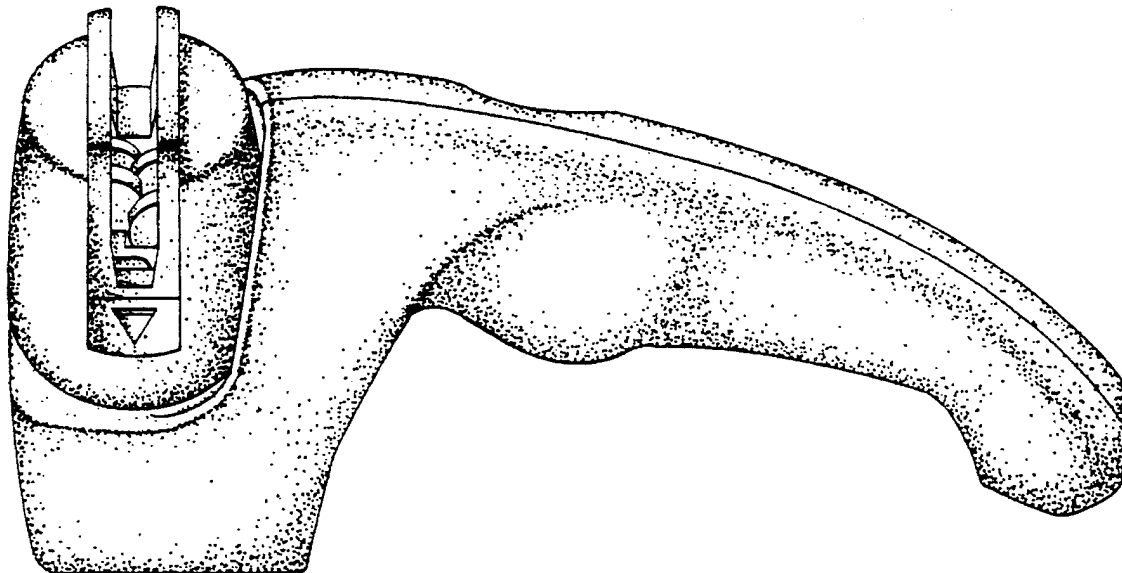
[57] **CLAIM**

The ornamental design for a knife sharpener, as shown and described.

DESCRIPTION

FIG. 1 is a side elevational view of a knife sharpener showing my new design;
 FIG. 2 is an opposite side elevational view thereof;
 FIG. 3 is an end elevational view, as viewed from the left of FIG. 1;
 FIG. 4 is an end elevational view, as viewed from the right of FIG. 1;
 FIG. 5 is a top plan view thereof;
 FIG. 6 is a bottom plan view thereof; and,
 FIG. 7 is a perspective view thereof.

1 Claim, 2 Drawing Sheets



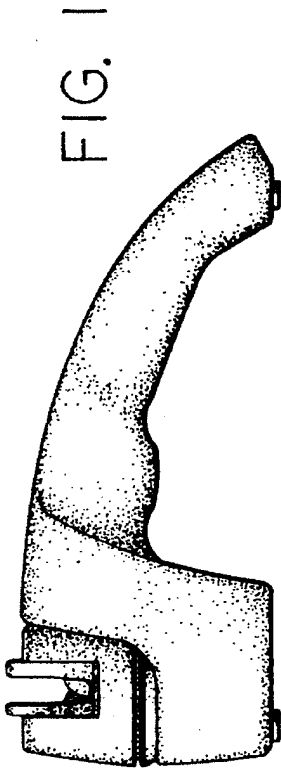


FIG. 1

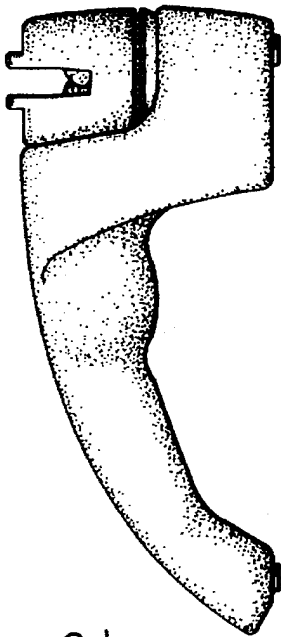


FIG. 2

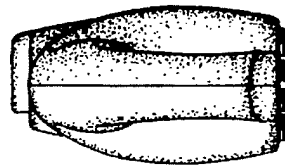


FIG. 4

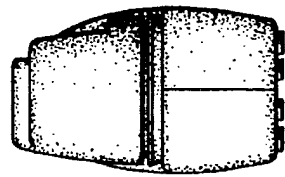


FIG. 3

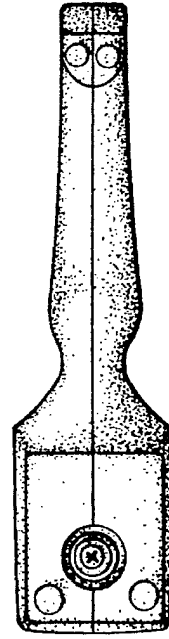


FIG. 6

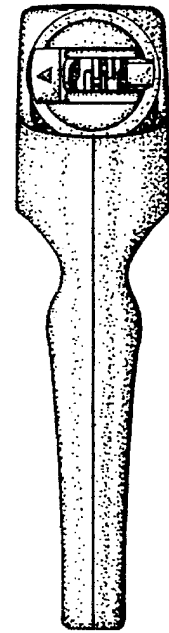


FIG. 5

FIG. 7

