



US00D659350S

(12) **United States Design Patent**
McDonnell

(10) **Patent No.:** **US D659,350 S**

(45) **Date of Patent:** **** May 15, 2012**

(54) **MEDICAL SCRUB TOP**

(76) Inventor: **Christopher McDonnell**, Ransomville,
NY (US)

(**) Term: **14 Years**

(21) Appl. No.: **29/359,479**

(22) Filed: **Apr. 12, 2010**

(51) **LOC (9) Cl.** **02-02**

(52) **U.S. Cl.** **D2/840; D2/717; D2/739**

(58) **Field of Classification Search** **D2/700,**
D2/716-718, 720, 739, 840-841, 844, 857,
D2/849, 858, 860, 862-864, 828, 831; 2/67,
2/69, 77, 102, 104, 113, 115, 125, 247

See application file for complete search history.

(56) **References Cited**

U.S. PATENT DOCUMENTS

3,721,998	A	3/1973	Meyers	
4,791,681	A *	12/1988	Dean	2/102
4,860,388	A *	8/1989	Dean	2/247
5,652,961	A	8/1997	Knight-Yurt	
D390,337	S *	2/1998	Mixon	D2/717
D396,135	S	7/1998	Wardle	
5,913,407	A *	6/1999	Keyes	2/247
D444,291	S *	7/2001	Poradzisz	D2/844
D574,126	S *	8/2008	McCray	D2/840
D579,178	S	10/2008	Snyder et al.	
D584,882	S *	1/2009	Trouillot et al.	D2/720

OTHER PUBLICATIONS

Jasco Uniform Co., p. 4, item No. 9900J, received 2007, edition 1107C.*

Jasco Uniform Co., p. 6, item No. 1055J, received 2007, edition 1107C.*

Jasco Uniform Co., p. 7, item No. 1010J, received 2007, edition 1107C.*

* cited by examiner

Primary Examiner — Wan Laymon

(74) *Attorney, Agent, or Firm* — Simpson & Simpson, PLLC

(57) **CLAIM**

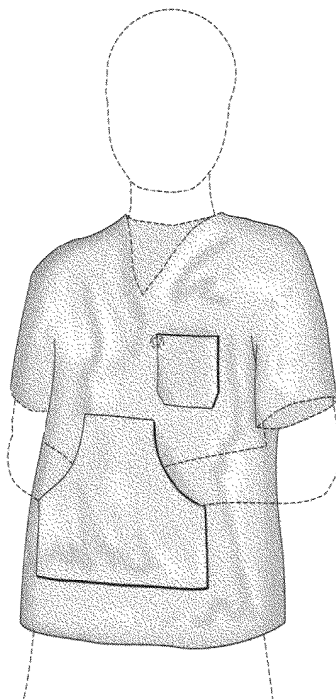
The ornamental design for a medical scrub top, as shown and described.

DESCRIPTION

FIG. 1 is a perspective view of the present invention; FIG. 2 is an enlarged front elevational view of the invention; FIG. 3 is an enlarged rear elevational view of the invention; FIG. 4 is an enlarged right side elevational view of the invention; FIG. 5 is an enlarged left side elevational view of the invention; FIG. 6 is an enlarged top plan view of the invention; and, FIG. 7 is an enlarged bottom plan view of the invention.

The broken line illustrations of a v-neck collar, seams, and short sleeves shown in FIGS. 1-7 and the name badge loop shown in FIGS. 1 and 2 are for illustrative purposes only and form no part of the claimed invention. The silhouette of a person shown in FIG. 1 is included for illustrating the general environment and forms no part of the claimed design.

1 Claim, 5 Drawing Sheets



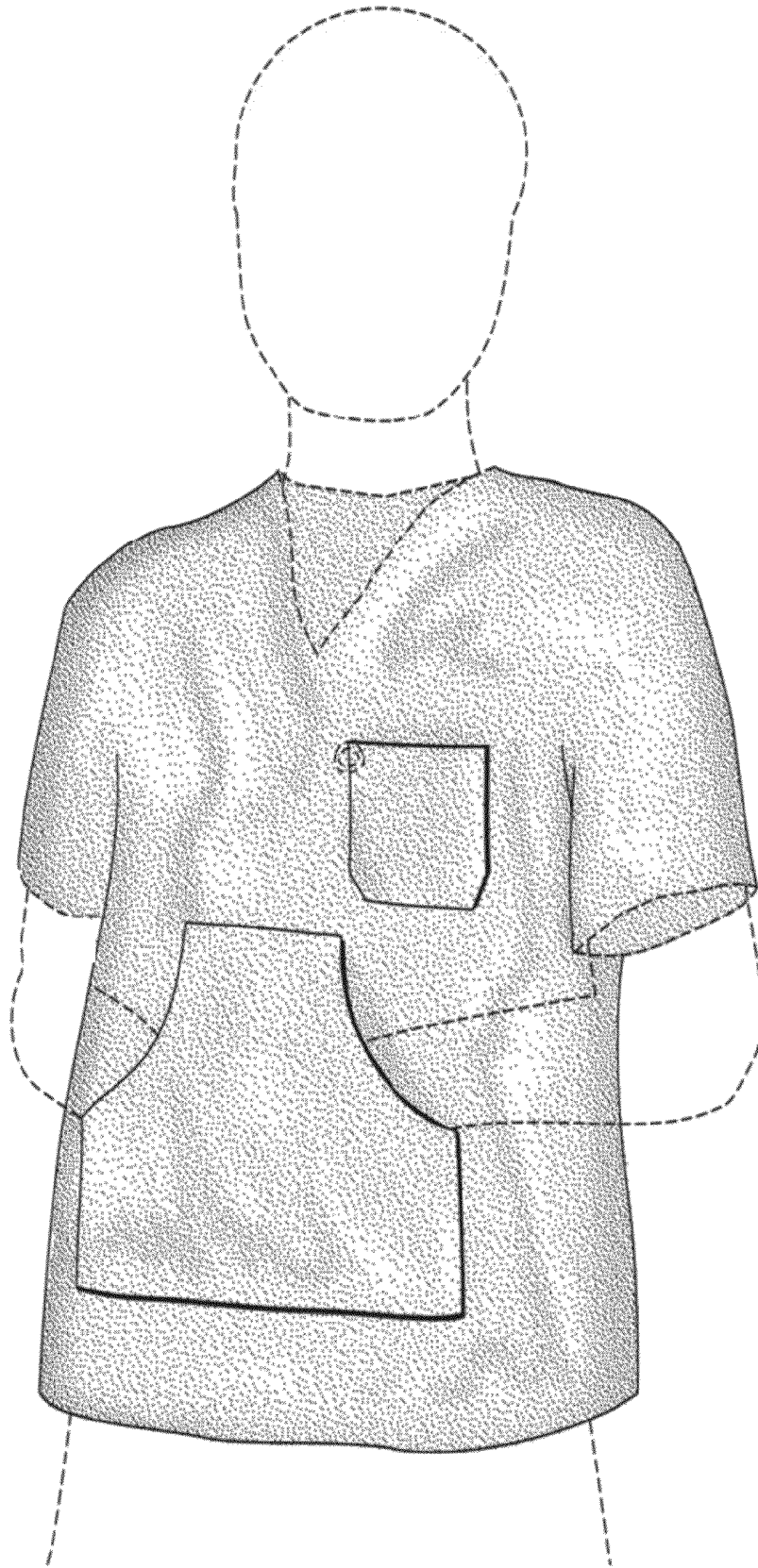


Fig. 1



Fig. 2



Fig.3

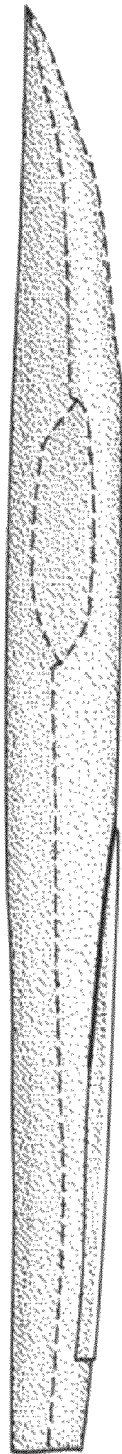


Fig. 4

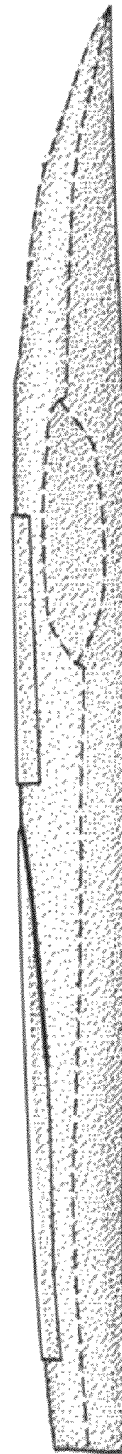


Fig. 5

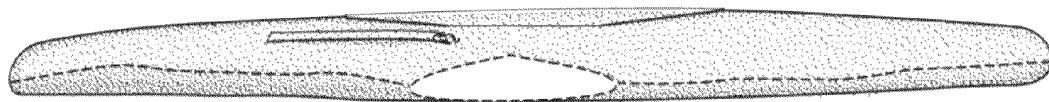


Fig. 6

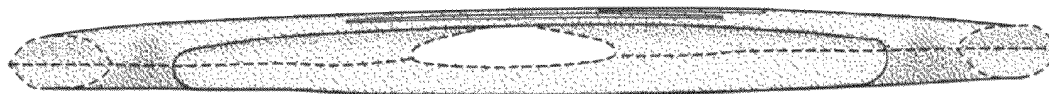


Fig. 7